

Suction Load Washer

Patent Pending

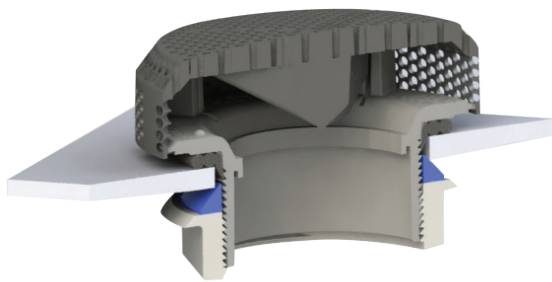
No silicone • No spot facing • No cracked rings

Features:

- No more back facing or silicone required!
- Fast and easy to install
- Self-aligns easily and accurately
- Works with uneven surfaces
- Available with all 5" Suctions

Specifications:

- Fits wall thicknesses from 3/16" to 7/16"
- Extra thick EPDM Gasket
- 3 7/16" Hole Saw Size
- Torque = 22 ft/lbs.



Three visible tabs to assure the Load Washer is in place

Ask your Waterway sales representative for available part numbers.