



Ells, Tees, & Wyes / Sweep Ells



411-9100



411-9110



411-9120



411-9130



411-9140



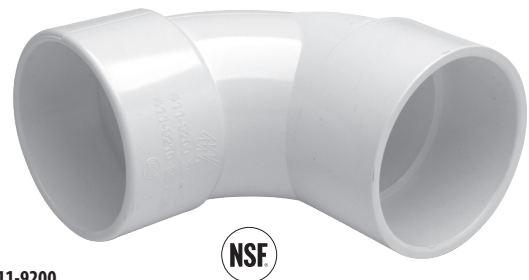
411-9150



411-9160



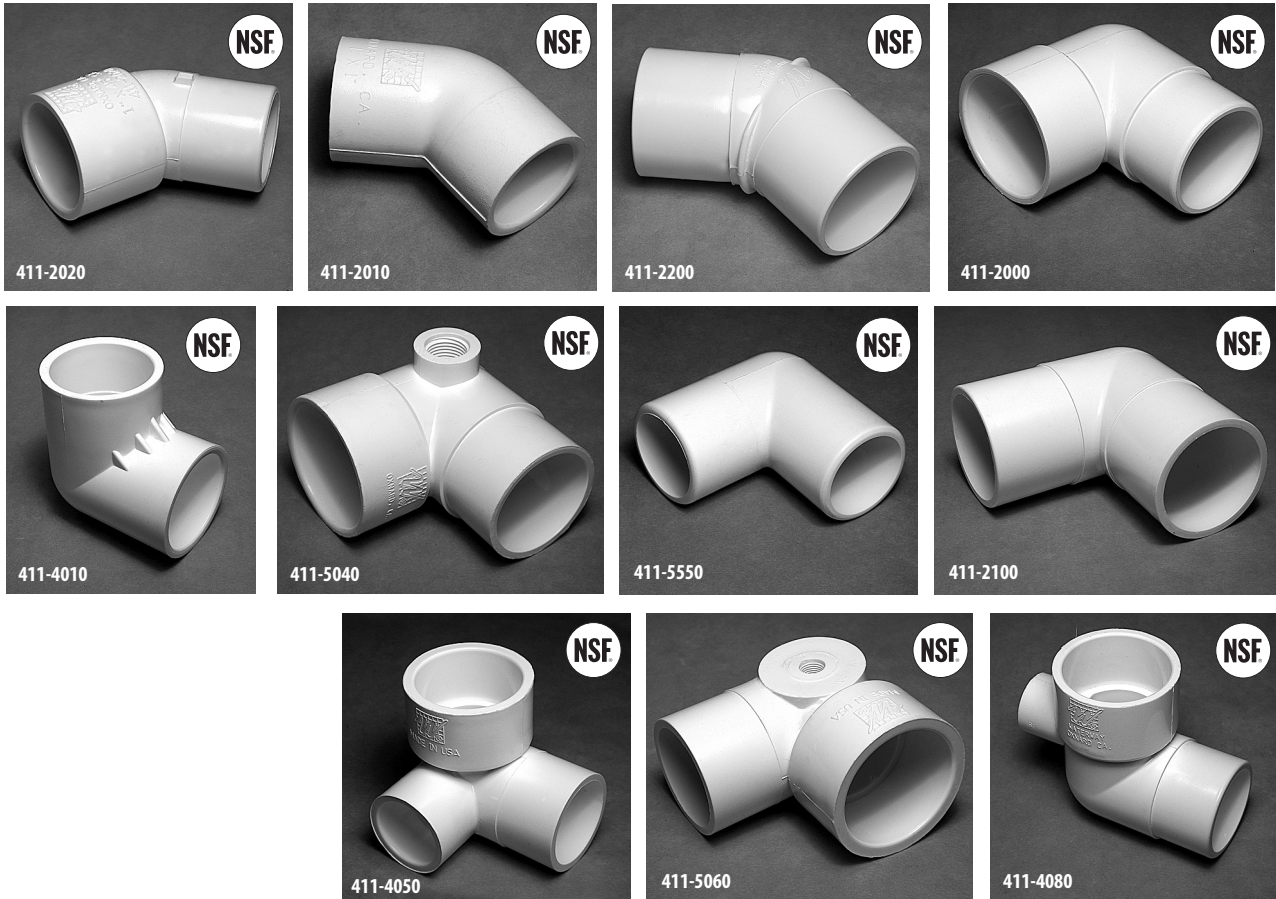
411-9210



411-9200

Sweep Ells

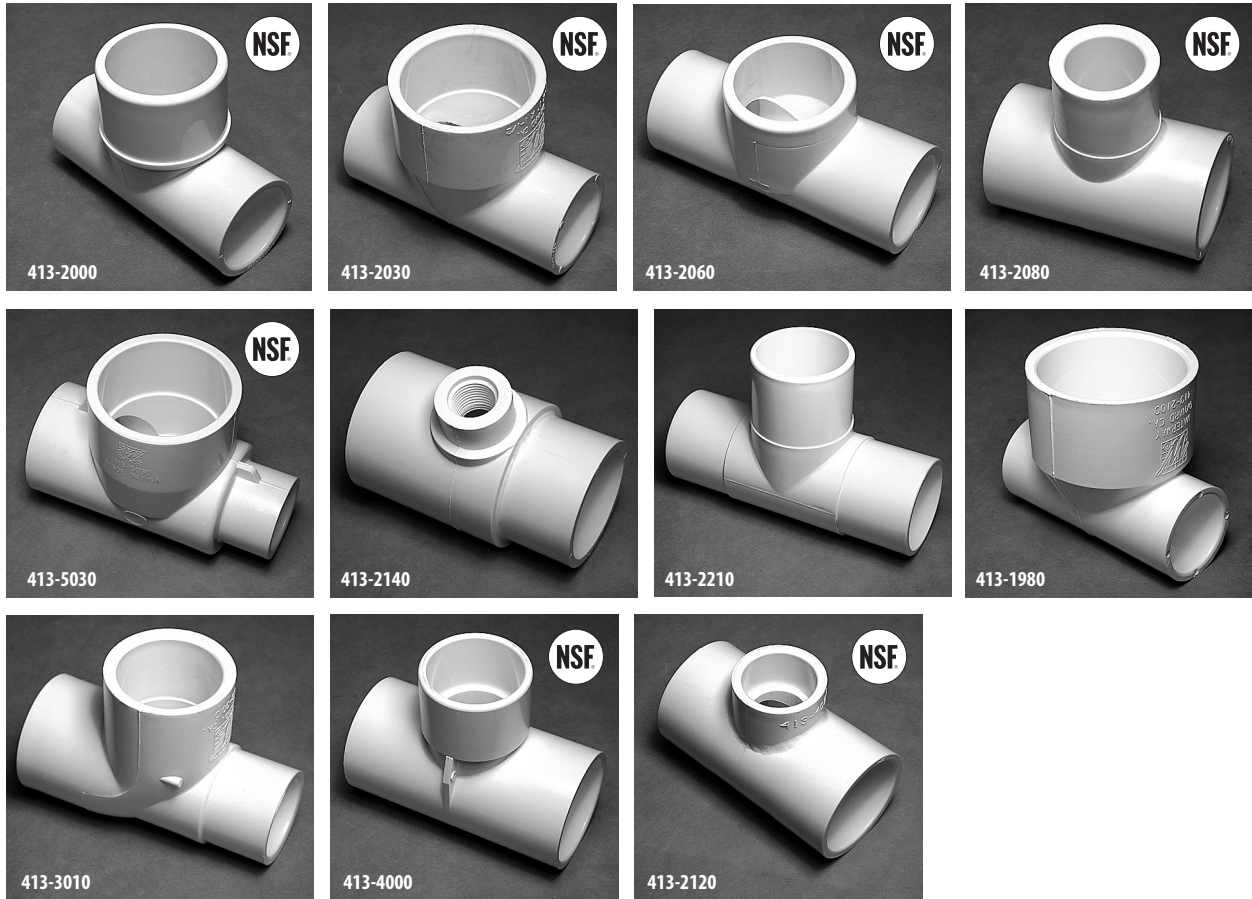
Part No.	Description	NSF Approved	Case Weight	Case Quantity	List (US \$)
411-9100	1 1/2" Spigot x 1 1/2" S	x	7.19 lbs.	25	4.75
411-9110	1 1/2" S x 1 1/2" S	x	7.29 lbs.	25	4.75
411-9120	2" Spigot x 2" S	x	24.31 lbs.	60	5.34
411-9130	2" S x 2" S	x	24.13 lbs.	60	5.34
411-9140	2 1/2" Spigot x 2 1/2" S	x	20.92 lbs.	30	7.58
411-9150	2 1/2" S x 2 1/2" S	x	21.30 lbs.	30	7.58
411-9160	2" Spigot 90° x 2 1/2" S	x	21.67 lbs.	35	11.38
411-9200	3" S x 3" S	x	21.67 lbs.	17	11.38
411-9210	3" S x 3" Spigot	x	25.68 lbs.	20	11.14



45° and 90° Ells				
Part No.	Description	NSF Approved	Case Quantity	List (US \$)
411-2020	45° Street Ell – 1" S x 1" Spigot	x	50	4.03
411-4040	45° Street Ell – 1 1/2" S x 1 1/2" Spigot		140	5.37
411-5030	45° Street Ell – 2" S x 2" Spigot		90	6.71
411-2010	45° Ell – 1" S x 1" S	x	150	3.94
411-2200	45° Ell – 2" Spigot x 2" Spigot	x	80	7.07
411-2000	90° Street Ell – 1" S x 1" Spigot	x	50	2.76
411-4000	90° Street Ell – 1 1/2" S x 1 1/2" Spigot		130	4.67
411-5080	90° Street Ell – 2" S x 2" Spigot		60	5.99
411-4010	90° Ell – 1 1/2" S x 1 1/2" S	x	50	3.02
411-5040	90° Street Ell – 2" S x 2" Spigot x 1/2" FPT Left Side Outlet	x	60	11.70
411-5050	90° Street Ell – 2" S x 2" Spigot x 3/8" FPT Left Side Outlet		25	11.70
411-5550	90° Ell – 1 1/2" Spigot x 1 1/2" Spigot	x	50	4.67
411-2100	90° Ell – 2" Spigot x 2" Spigot	x	60	6.71
411-4050	90° Ell – 1 1/2" S x 1 1/2" Spigot x 1" S Side Outlet	x	25	6.71
411-5060	90° Street Ell – 1 1/2" S x 1 1/2" Spigot x 1/8" FPT Side Outlet	x	50	8.37
411-4080	90° Street Ell – 1 1/2" S x 1 1/2" Spigot x 1/2" S Outlet	x	50	6.52
411-9170	Ell - 2" S x 2" S x 3/4" SB		50	9.99
411-9180	Ell - 2 1/2" S x 2 1/2" S x 3/4" SB		30	12.79



Ells, Tees, & Wyes / Tees



Tees				
Part No.	Description	NSF Approved	Case Quantity	List (US \$)
413-2000	1" S x 1" S x 1 1/2" Spigot	x	50	5.02
413-2030	1" S x 1" S x 1 1/2" S	x	75	5.02
413-2060	Low Profile - 1" S x 1" S x 1 1/2" Spigot	x	50	5.71
413-2080	1" S x 1" S x 1" Spigot	x	100	2.72
413-5030	2" S x 1 1/2" S x 1" S	x	70	8.45
413-2140	2" S x 2" Spigot x 1/2" FPT		75	9.04
413-2180	2" Spigot x 2" S x 3/8" Air Bleed		75	8.77
413-2130	2" S x 2" Spigot x 3/4" FPT		75	9.04
413-2210	2" Spigot x 2" Spigot x 2" Spigot		40	8.42
413-1980	Reducer - 1/2" S x 1 1/2" S x 1" S		100	2.72
413-3010	Reducer - 1" S x 1" S x 1" Spigot / 3/4" S		50	3.18
413-4000	1 1/2" S x 1 1/2" S x 1 1/2" Spigot	x	90	6.92
413-2150	2" Spigot x 2" S x 1/2" S		75	6.74
413-2120	2" Spigot x 2" Spigot x 1" S	x	90	7.87
413-2090	1 1/4" S x 1 1/4" S x 1 1/2" Spigot		100	6.71



**GREAT FOR
SWIM SPAS**



Sanitary Tee			
Part No.	Description	Case Quantity	List (US \$)
413-2320	2 1/2" x 2 1/2" x 2 1/2"	15	20.60



Cross Tee				
Part No.	Description	NSF Approved	Case Quantity	List (US \$)
413-1770	Cross Tee - 1 1/2" S x 3/4" S x 3/4" S x 3/4" S	x	50	10.16

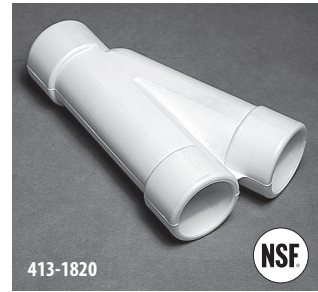


Tee Assemblies			
Part No.	Description	Case Quantity	List (US \$)
400-4100	Tee Assembly with Relief Plug 1 1/2" S x 1 1/2" Spigot x 3/8" FPT	100	10.54
400-4260	Tee Assembly with Relief Plug 2" Spigot x 2" S x 3/8" FPT with O-Ring	70	10.94

Ells / Tees / Wyes



Ells, Tees, & Wyes / Wyes and Manifold Wyes

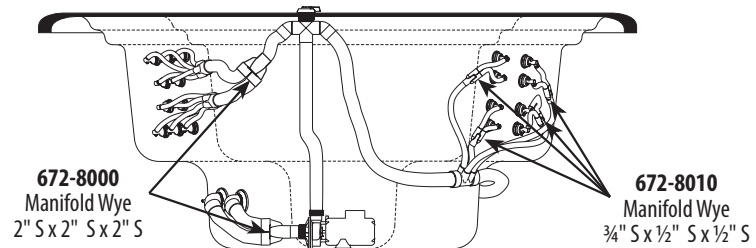


Wyes				
Part No.	Description	NSF Approved	Case Quantity	List (US \$)
413-1810	120° Wye - 3/4" S x 3/4" S x 3/4" S	x	50	6.71
413-4160	120° Wye - 1" S x 1" S x 1" S		100	6.71
413-4100	120° Wye - 1 1/2" S x 1 1/2" S x 1 1/2" S		70	10.08
413-5080	120° Wye - 2" S x 2" S x 2" S		50	14.06
413-5040	120° Wye - 2" S x 1 1/2" S x 1 1/2" S	x	50	14.06
413-4130	120° Wye - 1 1/2" S x 1" S x 1" S	x	140	9.04
413-1820	22 1/2° Wye - 3/4" S x 3/4" S x 3/4" S	x	50	6.27
413-2020	22 1/2° Wye - 1" S x 1" S x 1" S		120	6.71
413-4140	22 1/2° Wye - 1 1/2" S x 1" S x 1" S		90	7.64



FEATURES:

- Improves performance
- Saves plumbing cost
- Makes plumbing easier
- Available in two different sizes
- Made of fitting grade type 1 PVC
- Made in the USA



Manifold Wyes			
Part No.	Description	Case Quantity	List (US \$)
672-8010	3/4" S x 1/2" S x 1/2" S	220	4.48
672-8020	1" S x 3/4" S x 3/4" S	180	4.48
672-8040	1 1/2" S x 1 1/2" S x 1 1/2" S	50	10.21
672-8000	2" S x 2" S x 2" S	40	14.03
672-8050	2 1/2" S x 2 1/2" S x 2 1/2" S	20	12.11
672-9540	(1) 2 1/2" S x (3) 2" S Distributor Manifold	25	17.51

