

Slice Valves		
Part No.	Description	List (US \$)
880-1500	1 1/2" Slice Valve - 2" SPG / 1 1/2" S x 1 1/2" Spigot	18.78
880-1510	1 1/2" Slice Valve - 1 1/2" Spigot x 1 1/2" Spigot	18.78
880-1530	1 1/2" MIP Slice Valve - 1 1/2" Hose	21.12
880-2020	2" Slice Valve - 2" S x 2" S	23.46
880-2010	2" Slice Valve - 2" Spigot x 2" Spigot	23.46
880-2000	2" Slice Valve - 2" Spigot x 2" S	23.46
880-2500	2 1/2" Slice Valve - 2 1/2" S x 2 1/2" Spigot	36.27
880-2520	2 1/2" Slice Valve - 2 1/2" S x 2 1/2" S	36.27
880-1599	Clip for 1 1/2" Slice Valve	1.09
880-2099	Clip for 2" Slice Valve	1.27
880-2599	Clip for 2 1/2" Slice Valve	1.32

FEATURES:

- Adjustable flow control
- Easy to adjust in tight places
- Requires less overhead space to turn on/off compared to slice valve
- 100% shut off
- No metal parts in contact with the water for a non-corrosive gate valve
- Waterway manufactures all TruSeal Gate Valves in the U.S.A.



Gate Valves				
Part No.	Description	Color	Case Quantity	List (US \$)
600-2370	Gate Valve - 2" S x 2" S	Clear	20	32.48
600-2380	Gate Valve - 2" S x 2" Spigot	Clear	20	32.48
600-2300	Gate Valve - 2 1/2" S x 2 1/2" Spigot	Clear	18	34.06

Slice / Gate Valves



Valves / Check Valves and U-Bends



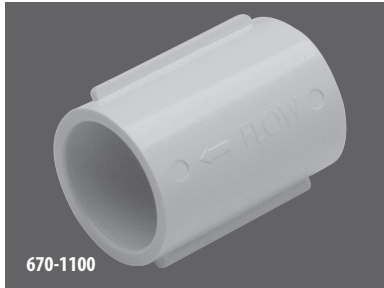
600-8140



550-6800



600-2900



670-1100



600-4000



670-2270

Check Valves

Part No.	Description	Case Quantity	List (US \$)
600-8140	Air Check Valve - ¼ lb. Spring - 1 ½" S x 1 ½" S	50	20.12
600-8160	Air Check Valve - ¼ lb. Spring - 2" Spigot x 2" Spigot	50	21.13
600-8150	Water Bypass Valve - 8 lb. Spring - 1 ½" S x 1 ½" S (standard color is black)	50	27.89
550-6810	Flapper Check Valve Body - 1.25 - 2 lbs. Spring - 2" S x 2" S	72	14.45
550-6800	Flapper Check Valve Body - 2.5 - 8 lbs. Spring - 2" S x 2" S	72	14.45
600-4000	Flapper Check Valve - Tee - 1" S x 1" S (standard color is white)	80	17.28
600-5000	Check Valve Assembly - Tee - 1" S x 1" S	140	10.12
600-2900	1 ½" Blower Check Valve Assy	45	7.62
670-1100	1" Check Valve with Flapper Assembly		5.38
670-2270	½" S NEOPERL Check Valve with Cap/Foam	125	9.23
670-2220	½" S Tee NEOPERL Check Valve with Cap/Foam	150	9.73

NEW!



429-4000



400-4130

U-Bends

Part No.	Description	Case Quantity	List (US \$)
429-4000	U-Bend - 1 ½" S x 1 ½" S	50	7.58
429-4030	U-Bend - 2" S x 2" S	40	11.27
400-4130	2" Sweep Vent Grate Assembly	12	11.76