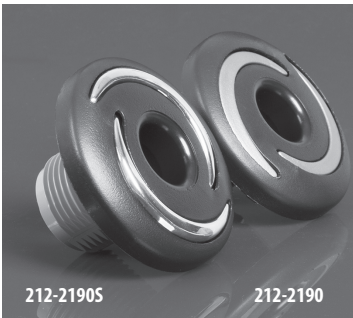
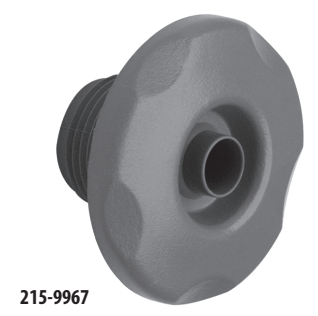
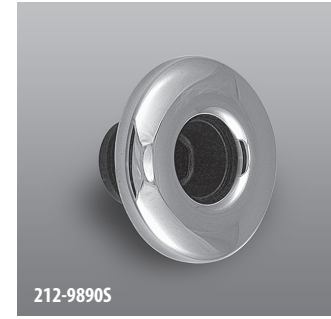
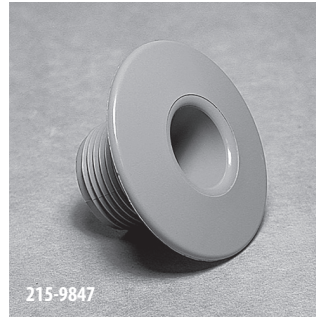
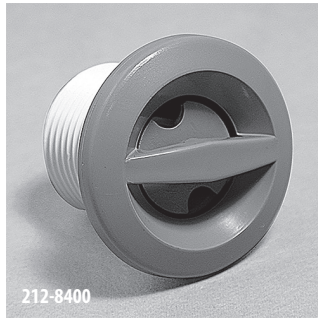
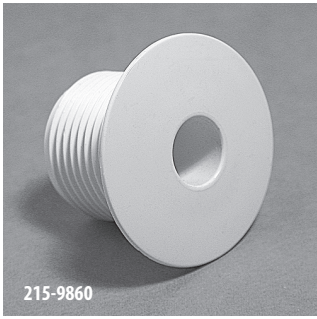




## Jets / Cluster Jet Internals



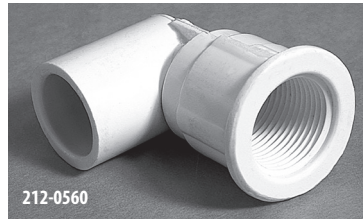
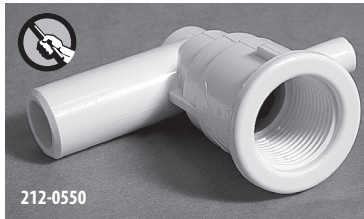
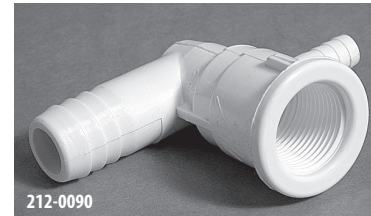
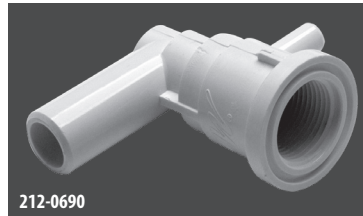
Spa Jets

### Cluster Jet Internals

Part No.	Description	Case Quantity	List (US \$)
<b>215-9860</b>	Ozone - Smooth	200	2.64
<b>212-9870</b>	Ozone - Stainless Steel	500	5.84
<b>212-8400</b>	Front Access - Pulsator - Smooth	450	4.58
<b>215-9950</b>	Fixed Directional - 5-Scallop	500	3.23
<b>215-9840</b>	Large Face - Smooth	150	3.23
<b>212-9890S</b>	Non-Adjustable - Large Face - Stainless Steel - Thick	250	6.39
<b>215-9820</b>	Non-Adjustable - Large Face - Textured - Thick	500	3.23
<b>215-9830</b>	Large Face - Textured - 5-Scallop	500	3.89
<b>215-9960</b>	Fixed Directional - Large Face - 5-Scallop	500	4.56
<b>212-9960S</b>	Fixed Directional - Large Face - Stainless Steel	250	8.70
<b>212-8810</b>	Directional - Large Face - Smooth	250	4.58
<b>212-8830</b>	Directional - Large Face - 5-Scallop	250	4.58
<b>215-9900</b>	Extra Large Face - 2 3/8" - Smooth	350	3.69
<b>212-9900S</b>	Extra Large Face - 2 3/8" - Stainless Steel	250	7.33
<b>212-2190</b>	Non-Adjustable Ozone Cluster - Eclipse - Plastic	200	4.57
<b>212-2190S</b>	Non-Adjustable Ozone Cluster - Eclipse - Stainless Steel	200	7.40
<b>212-2890S</b>	Ozone - Orion - Stainless Steel	200	8.28

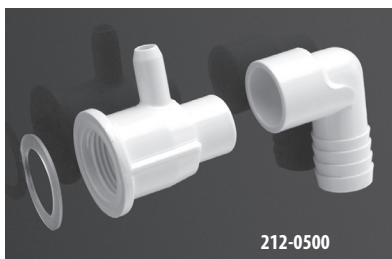


## Jets / Ozone Cluster & Universal Cluster Jet Body



### Ozone Cluster Jet Body Assemblies

Part No.	Description	Case Quantity	List (US \$)
<b>211-0380</b>	Straight Body - 1/2" S x 3/8" SMTH BRB Cluster/Ozone Jet Body	250	5.20
<b>212-0090</b>	Ell Body - 3/8" RB Air x 3/4" RB Water with Nozzle	200	5.20
<b>212-0540</b>	Ell Body - No Air x 3/4" S Water with Nozzle	180	5.20
<b>212-0550</b>	Ell Body - 3/8" B Air x 3/4" SB Water with Nozzle	180	5.20
<b>212-0560</b>	Ell Body - No Air x 1/2" S Water with Nozzle	200	5.20
<b>212-0580</b>	Ell Body - 3/8" RB Air x 1/2" S Water with Nozzle	200	5.20
<b>212-0590</b>	Ell Body - 3/8" RB Air x 3/4" S Water with Nozzle	180	5.20
<b>212-0690</b>	Ell Body - 3/8" RB Air x 3/4" SB Water with O-ring groove	180	5.20



### Universal Cluster Jets

Part No.	Description	Case Quantity	List (US \$)
<b>212-0500</b>	Universal Cluster Jet Body Assembly - 3/4" RB x 90° Ell - Flat Gasket	200	5.55
<b>212-0500G</b>	Universal Cluster Jet Body Assembly - 3/4" RB x 90° Ell - Grommet Gasket	200	5.55

### Euro Blaster Jet Body and Wall Fitting Assembly

<b>212-4150</b>	3/4" RB x 3/8" SB - 1/2" Orifice - 25 GPM @ 15 PSI	200	10.43
-----------------	--	-----	-------

### Neck Jet

<b>239-0749-DSGSPS</b>	Cluster Storm 100% S/O Dir XL 4 Swirl 2 Tone (THD)	100	8.83
<b>239-0759-DSGS</b>	Cluster Storm 100% S/O Dir 4 Swirl w/Mtl (THD)	200	16.04
<b>239-0771S-DSGSPS</b>	Cluster Storm 100% S/O DirRev Swirl w/Mtl (THD)	200	16.04

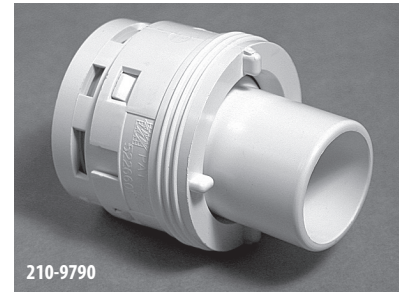
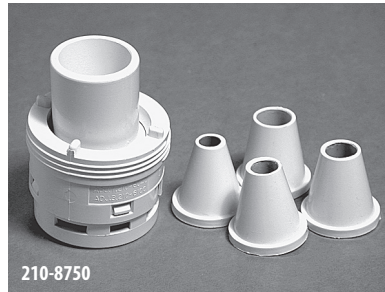
### Cluster Jet Accessories

Part No.	Description	Case Quantity	List (US \$)
<b>711-9870</b>	Cluster/Ozone Flat Gasket	500	0.64
<b>711-9860</b>	Cluster Grommet Gasket	500	0.64
<b>711-4070</b>	Cluster Gasket with O-ring Rib	500	0.64



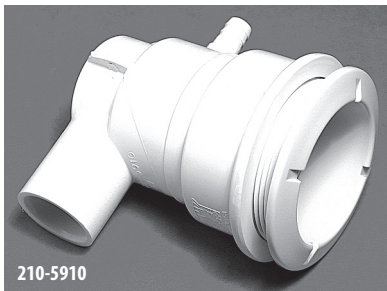
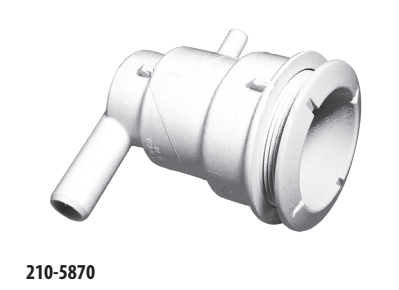


## Jets / Poly Jets



### Standard Poly Jets

Part No.	Description	Case Weight	Case Quantity	List (US \$)
<b>210-6040</b>	Adjustable - Caged Style	11.6 lbs.	75	13.40
<b>210-8750</b>	Monster - Caged Style (5/16" - 3/8" - 7/16" - 1/2" Orifice)	8.39 lbs.	50	13.40
<b>210-9790</b>	Whirlpool - Caged Style (3/4" Orifice)	6.05 lbs.	50	13.40



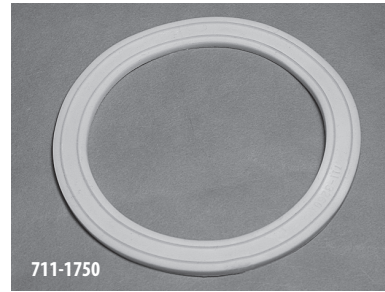
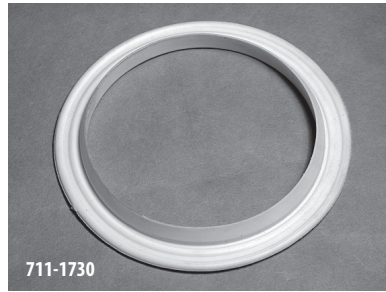
Metric  
210-5937



### Poly Jet Body Assemblies

Part No.	Description	Case Quantity	List (US \$)
<b>210-5830</b>	1" S Water x 1" S Air - No Top Plug	40	13.40
<b>210-5860</b>	Tee Body - 1 1/2" S Water x 1" S Air - with Top Plug	30	13.40
<b>210-5870</b>	Ell Body - 3/4" SB Water x 3/8" RB Air	60	13.40
<b>210-5910</b>	Ell Body - 3/4" S Water x 3/8" RB Air	60	13.40
<b>210-5950</b>	Straight Body - 1 1/2" S Water x 1/2" / 1" Spigot Air	60	13.40
<b>210-5937</b>	NEW Metric Jet Body - 50mm Water x 20mm Air	60	13.40
<b>210-9500</b>	32mm Water x 32mm Air	30	13.40

All Poly Jet body assemblies include a body and wall fitting.



**Poly Jet Accessories**

Part No.	Description	Case Quantity	List (US \$)
<b>711-1730</b>	Grommet Gasket	1400	0.64
<b>711-1750</b>	Standard Gasket (Thin)	500	0.64
<b>711-4750</b>	3/16" Gasket (Thick)	500	0.94
<b>916-1250</b>	Escutcheon - Stainless Steel ( <i>Standard Poly Jets only</i> )	3	5.77
<b>218-1770A</b>	Wrench/Test Plug with O-Ring Assembly	150	6.71
<b>805-0132</b>	Wrench O-Ring	25	0.69



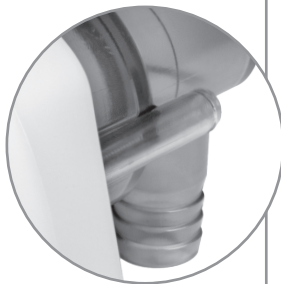
## Spa Jets / Storm Jet Body Assemblies

# NEW!

### IMPROVED JET BODIES

- Molded-in Threads
- Molded-in GLO Ports on Mini, Poly & Power

### Thread-in Jets



NEW Built-in GLO Ports



**Made in the USA!**



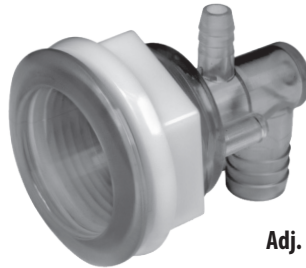
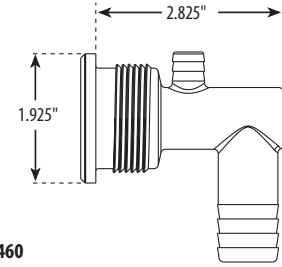
**NEW!**  
GLO Port Gib  
See page 149  
for GLO Clip.



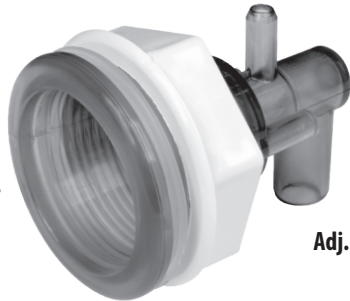
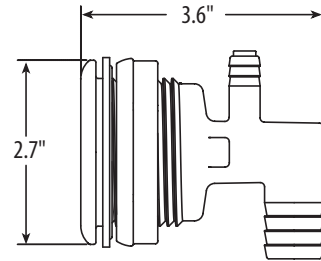
Adj. Cluster Storm



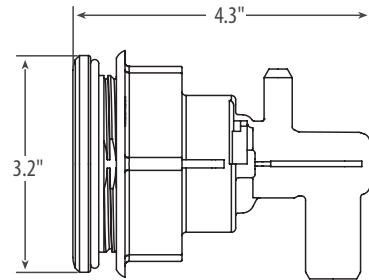
218-9460



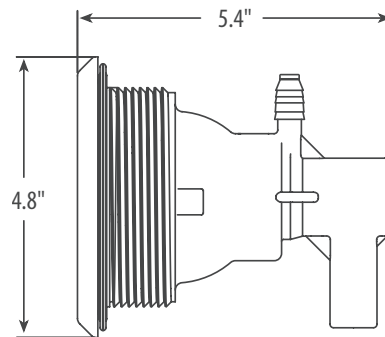
Adj. Mini Storm



Adj. Poly Storm



Adj. Power Storm



*Note: Products shown may be covered under patents US8458825, CA2644557.*

### In-Ground Portable Thread-In Spa Jet Body Assemblies

#### FEATURES:

- Designed specifically for in-ground portable spa applications
- Accepts all Mini-Storm and Poly Storm series thread-in jet internals
- Allows for flex or rigid plumbing
- Resists plumbing deterioration in harsh soils
- Resists rodent damage to plumbing
- Made of NSF fitting grade PVC material



228-0380



228-0390



### Adjustable Cluster Storm Thread-In Jet Body Assemblies

Part No.	Description	Case Quantity	List (US \$)
<b>228-1570G</b>	Body Assembly - 3/4" S x 3/8" RB	100	7.98
<b>228-1550G</b>	Body Assembly - 3/4" RB x 3/8" RB	100	7.98
<b>228-1560G</b>	Body Assembly - 3/4" SB x 3/8" - SB	100	7.98
<b>228-1720G</b>	Body Assembly - 3/4" RB x No Air	100	7.98

### Mini-Storm Thread-In Jet Body Assemblies

Part No.	Description	Case Quantity	List (US \$)
<b>228-0300</b>	Body Assembly - 3/4" RB x 3/8" RB	100	8.42
<b>228-0330</b>	Body Assembly - 3/4" SB x 3/8" - SB	100	8.42
<b>228-0340</b>	Body Assembly - 3/4" SB x 3/8" RB - No Air	100	8.42

### Poly Storm Thread-In Jet Body Assemblies

Part No.	Description	Case Quantity	List (US \$)
<b>228-0410</b>	Body Assembly - 3/4" S x 3/8" SB	70	9.53
<b>228-0400</b>	Body Assembly - 3/4" RB x 3/8" RB	70	9.53
<b>228-0430</b>	Body Assembly - 3/4" SB x 3/8" SB	70	9.54

### Power Storm Thread-In Jet Body Assemblies

Part No.	Description	Case Quantity	List (US \$)
<b>228-0020</b>	Body Assembly - 3/4" S / 1" SPG x 3/8" SB	25	10.41
<b>228-0040</b>	Body Assembly - 3/4" RB x 3/8" RB	25	10.41
<b>228-0010</b>	Body Assembly - 3/4" SB x 3/8" SB	25	10.41

### In-Ground Portable Thread-In Spa Jet Body Assemblies

Part No.	Description	Case Quantity	List (US \$)
<b>228-0380</b>	In-Ground Mini-Storm Jet Body Assembly - 3/4" S x 1/2" S / 3/4" Spigot	--	9.70
<b>228-0390</b>	In-Ground Poly Storm Jet Body Assembly - 3/4" S x 1/2" S / 3/4" Spigot	--	9.70

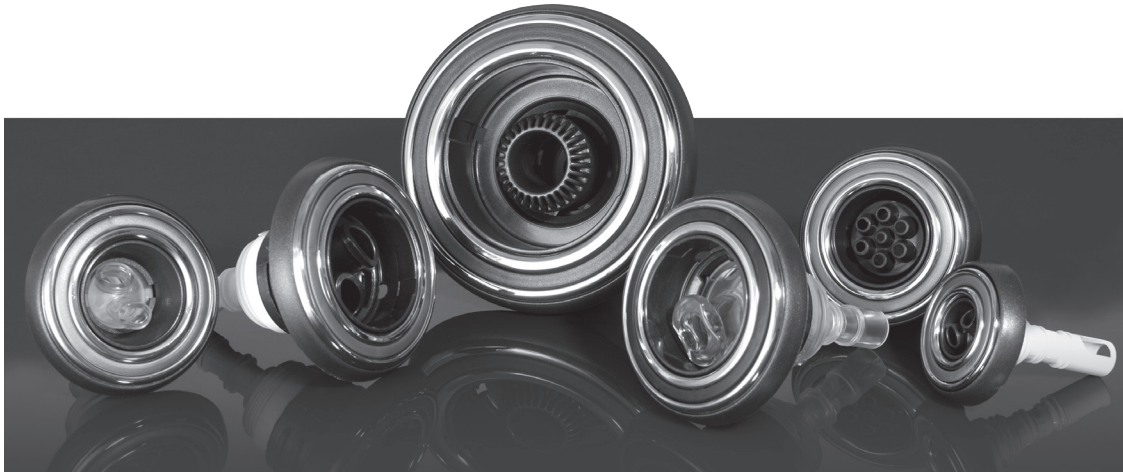
**Note:** All part numbers are for the new thread-in style

- To order snap-in bodies; change the part number prefix to 212-xxxx
- To order Glo style bodies: change the last number to 8. ie: 228-2008

**Note:** Jet Bodies include flat gaskets. Grommet gaskets available upon request. CPVC bodies available upon request.

**Note:** Products shown may be covered under patents US8458825, CA2644557.





**Orion Storm Jets**

Part No.	Jet Type	Eyeball	Size	Style	Case Qty.	List (US \$)
239-4000S	Adj. Cluster Storm	Directional	2 1/4"	Plastic/Stainless Steel	200	12.10
239-4020S	Adj. Cluster Storm	Rifled	2 1/4"	Plastic/Stainless Steel	200	12.10
239-4030S	Adj. Cluster Storm	Multi-Massage	2 1/4"	Plastic/Stainless Steel	200	12.10
239-4010S	Adj. Cluster Storm	Twin Roto	2 1/4"	Plastic/Stainless Steel	200	13.70
239-4100S	Large Cluster Storm	Directional	3 5/16"	Plastic/Stainless Steel	180	19.52
239-4120S	Large Cluster Storm	Rifled	3 5/16"	Plastic/Stainless Steel	180	19.52
239-4130S	Large Cluster Storm	Multi-Massage	3 5/16"	Plastic/Stainless Steel	180	19.52
239-4110S	Large Cluster Storm	Twin Roto	3 5/16"	Plastic/Stainless Steel	180	23.40
239-4200S	Mini-Storm	Directional	3 5/16"	Plastic/Stainless Steel	150	21.90
239-4250S	Mini-Storm	Multi-Massage	3 5/16"	Plastic/Stainless Steel	150	21.90
239-4210S	Mini-Storm	Roto	3 5/16"	Plastic/Stainless Steel	150	25.73
239-4220S	Mini-Storm	Twin Roto	3 5/16"	Plastic/Stainless Steel	150	25.73
239-4230S	Mini-Storm	Pulse Massage	3 5/16"	Plastic/Stainless Steel	150	21.91
239-4260S	Mini-Storm	Twister	3 5/16"	Plastic/Stainless Steel	150	25.73
239-4240S	Mini-Storm	Rifled	3 5/16"	Plastic/Stainless Steel	150	21.90
239-4900S	Large Poly Storm	Directional	4 3/8"	Plastic/Stainless Steel	70	33.61
239-4940S	Large Poly Storm	Multi-Massage	4 3/8"	Plastic/Stainless Steel	70	33.61
239-4910S	Large Poly Storm	Roto	4 3/8"	Plastic/Stainless Steel	70	37.47
239-4920S	Large Poly Storm	Twin Roto	4 3/8"	Plastic/Stainless Steel	70	37.47
239-4930S	Large Poly Storm	Pulse Massage	4 3/8"	Plastic/Stainless Steel	70	37.47
239-4960S	Large Poly Storm	Twister	4 3/8"	Plastic/Stainless Steel	70	37.47
239-4950S	Large Poly Storm	Rifled	4 3/8"	Plastic/Stainless Steel	70	33.61
239-4400S	Power Storm	Directional	5 1/4"	Plastic/Stainless Steel	40	36.77
239-4450S	Power Storm	Multi-Massage	5 1/4"	Plastic/Stainless Steel	40	36.77
239-4410S	Power Storm	Roto	5 1/4"	Plastic/Stainless Steel	40	43.67
239-4420S	Power Storm	Twin Roto	5 1/4"	Plastic/Stainless Steel	40	43.67
239-4430S	Power Storm	Pulse Massage	5 1/4"	Plastic/Stainless Steel	40	43.67
239-4460S	Power Storm	Twister	5 1/4"	Plastic/Stainless Steel	40	43.67
239-4440S	Power Storm	Rifled	5 1/4"	Plastic/Stainless Steel	40	36.77
239-4700S	Large Power Storm	Directional	6 1/2"	Plastic/Stainless Steel	25	40.08
239-4750S	Large Power Storm	Multi-Massage	6 1/2"	Plastic/Stainless Steel	25	40.08
239-4770S	Large Power Storm	Roto	6 1/2"	Plastic/Stainless Steel	25	46.99
239-4720S	Large Power Storm	Twin Roto	6 1/2"	Plastic/Stainless Steel	25	46.99
239-4730S	Large Power Storm	Pulse Massage	6 1/2"	Plastic/Stainless Steel	25	46.99
239-4760S	Large Power Storm	Twister	6 1/2"	Plastic/Stainless Steel	25	46.99
239-4740S	Large Power Storm	Rifled	6 1/2"	Plastic/Stainless Steel	25	40.08

For GLO style internals on all Storm Jets use the prefix 230 and the last number as 8. **230-XXX8**

For 100% shut-off Cluster & Mini Jets use the prefix 225. **225-XXXX**



# Spa Jets / Storm Jets - Eclipse

Thread-in Jet Patent # US8458825 & CA2644557

## Cluster – 2-1/8" Diameter

Case Qty: 200 Plastic-/box 200 Stainless-/box



	<b>Directional</b>	<b>List Price</b>
Plastic	239-0100	4.48
Stainless	239-0100S	12.10



	<b>Rifled</b>	<b>List Price</b>
	239-0110	4.48
	239-0110S	12.10



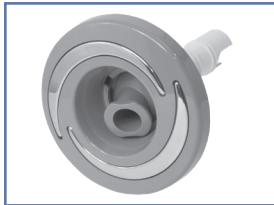
	<b>Multi-Massage</b>	<b>List Price</b>
	239-0120	4.48
	239-0120S	12.10



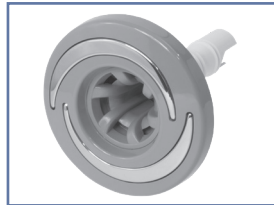
	<b>Twin Roto</b>	<b>List Price</b>
	239-0130	6.08
	239-0130S	13.30

## Mini – 3-1/16" Diameter

Case Qty: 180 Plastic-/box 180 Stainless-/box



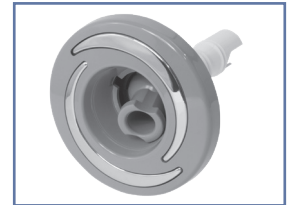
	<b>Directional</b>	<b>List Price</b>
Plastic	239-0300	11.20
Stainless	239-0300S	21.91



	<b>Rifled</b>	<b>List Price</b>
	239-0310	11.20
	239-0310S	21.91



	<b>Multi-Massage</b>	<b>List Price</b>
	239-0320	11.20
	239-0320S	21.91



	<b>Roto</b>	<b>List Price</b>
	239-0330	15.02
	239-0330S	25.73



	<b>Twin Roto</b>	<b>List Price</b>
Plastic	239-0340	15.02
Stainless	239-0340S	25.73



	<b>Pulse Massage</b>	<b>List Price</b>
	239-0350	15.02
	239-0350S	25.73



	<b>Twister</b>	<b>List Price</b>
	239-0360	15.02
	239-0360S	25.73

## LG Poly – 4" Diameter

Case Qty: 80 Plastic /box 70 Stainless /box



	<b>Directional</b>	<b>List Price</b>
Plastic	239-0500	13.68
Stainless	239-0500S	14.08



	<b>Rifled</b>	<b>List Price</b>
	239-0510	13.68
	239-0510S	31.06



	<b>Multi-Massage</b>	<b>List Price</b>
	239-0520	13.68
	239-0520S	31.06



	<b>Roto</b>	<b>List Price</b>
	239-0530	18.57
	239-0530S	34.89

Patent # CA 5,920,025



	<b>Twin Roto</b>	<b>List Price</b>
Plastic	239-0540	18.57
Stainless	239-0540S	34.89



	<b>Pulse Massage</b>	<b>List Price</b>
	239-0550	18.57
	239-0550S	34.89



	<b>Twister</b>	<b>List Price</b>
	239-0560	18.57
	239-0560S	34.89

For GLO style internals on all Storm Jets use the prefix 230 and the last number as 8.  
**230-XXX8**

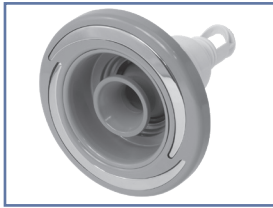
For 100% shut-off Cluster & Mini Jets use the prefix 225.  
**225-XXXX**



# Spa Jets / Storm Jets - Eclipse

Thread-in Jet Patent # US8458825 & CA2644557

## Power – 5" Diameter Case Qty: 40



	<b>Directional</b>	<b>List Price</b>
Plastic	239-7770	18.57
Stainless	239-7770S	36.77



	<b>Rifled</b>	<b>List Price</b>
	239-0620	18.57
	239-0620S	36.77



	<b>Multi-Massage</b>	<b>List Price</b>
	239-0630	18.57
	239-0630S	36.77



	<b>Roto</b>	<b>List Price</b>
	239-0640	24.31
	239-0640S	43.67

Patent # CA 5,920,025



	<b>Twin Roto</b>	<b>List Price</b>
Plastic	239-0650	24.31
Stainless	239-0650S	43.67



	<b>Pulse Massage</b>	<b>List Price</b>
	239-0660	24.31
	239-0660S	43.67



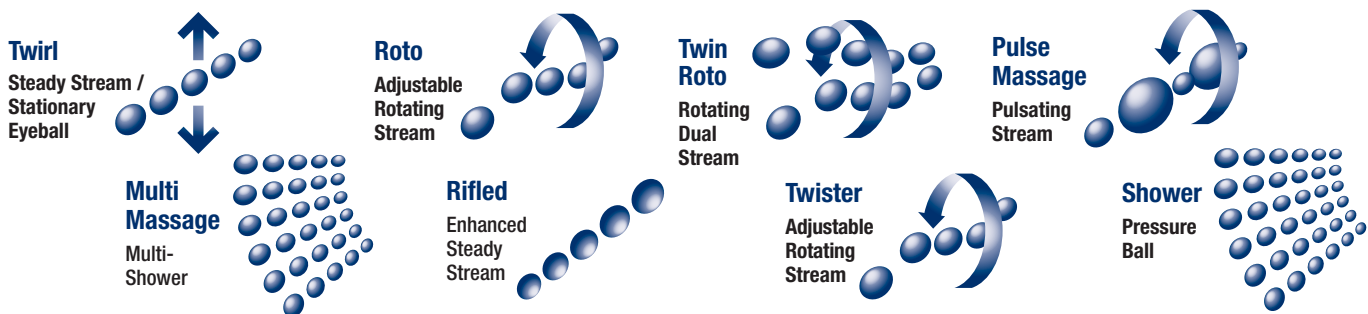
	<b>Twister</b>	<b>List Price</b>
	239-0670	24.31
	239-0670S	43.67

*For GLO style internals on all Storm Jets use the prefix 230 and the last number as 8.  
**230-XXX8***

*For 100% shut-off Cluster & Mini Jets use the prefix 225.  
**225-XXXX***



Spa Jets





# Spa Jets / Storm Jets - Reverse Eclipse

Thread-in Jet Patent # US8458825 & CA2644557

## Cluster – 2-1/8" Diameter

Case Qty: 200 Stainless-/box



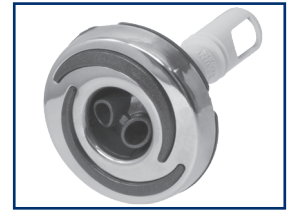
Directional List Price



Rifled List Price



Multi-Massage List Price



Twin Roto List Price

Plastic / NA  
Stainless

239-1700S-DSG 12.10

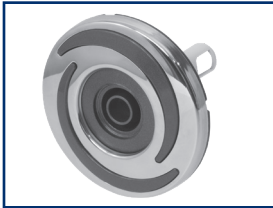
239-1710S-DSG 12.10

239-1720S-DSG 12.10

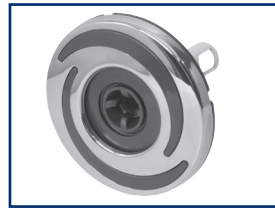
239-1730S-DSG 13.70

## LG Cluster – 3-5/16" Diameter

Case Qty: 180 Stainless-/box



Directional List Price



Rifled List Price



Multi-Massage List Price



Twin Roto List Price

Plastic / NA  
Stainless

239-1800S 19.52

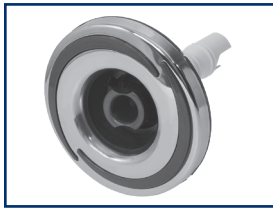
239-1810S 19.52

239-1820S 19.52

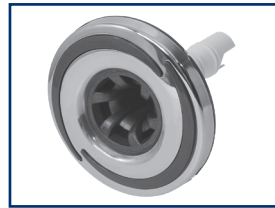
239-1830S 23.42

## Mini – 3-1/16" Diameter

Case Qty: 180 Stainless-/box



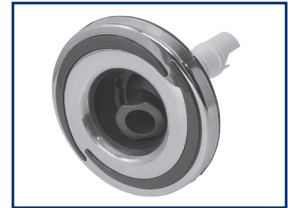
Directional List Price



Rifled List Price



Multi-Massage List Price



Roto List Price

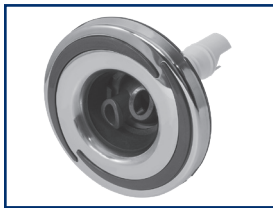
Plastic / NA  
Stainless

239-3100S 21.91

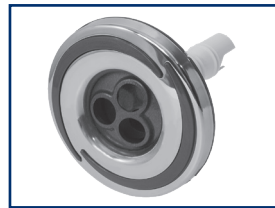
239-3110S 21.91

239-3120S 21.90

239-3130S 25.73



Twin Roto List Price



Pulse Massage List Price



Twister List Price

Plastic / NA  
Stainless

239-3140S 25.73

239-3150S 25.73

239-3160S 25.73

For GLO style internals on all Storm Jets use the prefix 230 and the last number as 8.  
**230-XXX8**

For 100% shut-off Cluster & Mini Jets use the prefix 225.  
**225-XXXX**

## LG Poly – 4" Diameter (continued next page)

Case Qty: 70 Stainless /box



Directional List Price



Rifled List Price



Multi-Massage List Price



Roto List Price

Plastic / NA  
Stainless

239-3300S 31.06

239-3310S 31.06

239-3320S 31.11

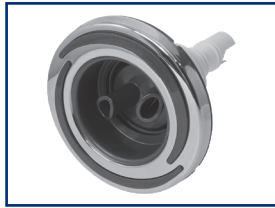
239-3330S 34.89



# Spa Jets / Storm Jets - Reverse Eclipse

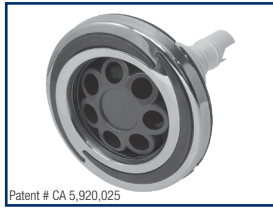
Thread-in Jet Patent # US8458825 & CA2644557

## LG Poly – 4" Diameter *(continued from previous page)* Case Qty: 70 Stainless /box



Twin Roto List Price

Plastic / NA  
Stainless 239-3340S 34.89



Patent # CA 5,920,025

Pulse Massage List Price

239-3350S 34.89



Twister List Price

239-3360S 34.89

For GLO style internals on all Storm Jets use the prefix 230 and the last number as 8.  
**230-XXX8**

For 100% shut-off Cluster & Mini Jets use the prefix 225.  
**225-XXXX**

## Power – 5" Diameter Case Qty: 40 Stainless /box



Directional List Price

Plastic / NA  
Stainless 239-1900S 36.77



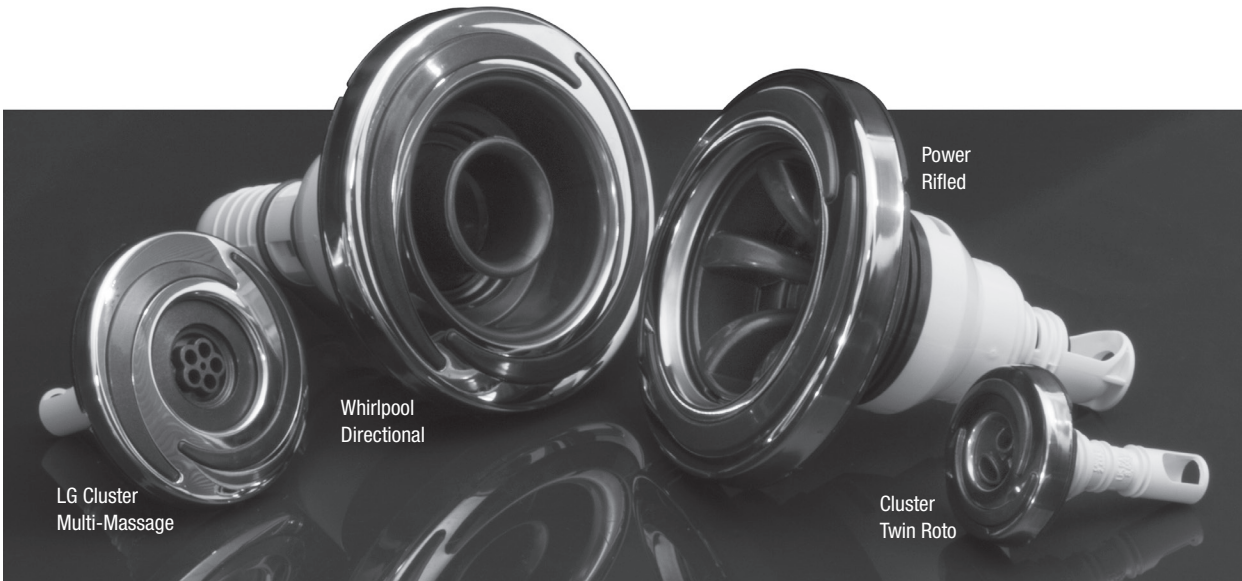
Roto List Price

239-1950S 43.67

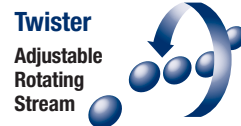
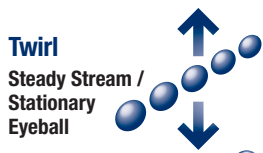


Twin Roto List Price

239-1910S 43.67



Spa Jets





# Spa Jets / Storm Jets - Luxe

Patent # US D700,972 S

Thread-in Jet Patent # US8458825 & CA2644557

## Cluster – 2-3/8" Diameter

Case Qty: Stainless-200/box



	Directional	List Price
Plastic	239-1500	4.48
Stainless	239-1500S	12.10



	Rifled	List Price
	239-1520	4.35
	239-1520S	12.10



	Multi-Massage	List Price
	239-1530	4.35
	239-1530S	12.10



	Twin Roto	List Price
	239-1510	6.08
	239-1510S	13.70

## Mini – 3-1/4" Diameter

Case Qty: Stainless 100/box



	Directional	List Price
Plastic	239-2300	10.88
Stainless	239-2300S	21.91



	Rifled	List Price
	239-2350	10.88
	239-2350S	21.29



	Multi-Massage	List Price
	239-2330	10.88
	239-2330S	21.90



	Roto	List Price
	239-2310	14.58
	239-2310S	25.73



	Twin Roto	List Price
Plastic	239-2320	14.58
Stainless	239-2320S	25.73



	Pulse Massage	List Price
	239-2340	14.58
	239-2340S	25.73



	Twister	List Price
	239-2360	14.58
	239-2360S	25.73

For GLO style internals on all Storm Jets use the prefix 230 and the last number as 8.  
**230-XXX8**

For 100% shut-off Cluster & Mini Jets use the prefix 225.  
**225-XXXX**

## Poly – 3-3/4" Diameter

Case Qty: Stainless 100/box



	Directional	List Price
Plastic	239-8300	14.31
Stainless	239-8300S	31.06



	Rifled	List Price
	239-8350	14.31
	239-8350S	31.06



	Multi-Massage	List Price
	239-8330	14.31
	239-8330S	31.06



	Roto	List Price
	239-8310	18.03
	239-8310S	34.89

Patent # CA 5,920,025



	Twin Roto	List Price
Plastic	239-8320	18.03
Stainless	239-8320S	34.89



	Pulse Massage	List Price
	239-8340	18.03
	239-8340S	34.89



	Twister	List Price
	239-8360	18.03
	239-8360S	34.89



Thread-in Jet Patent # US8458825 & CA2644557

**LG Poly – 4-3/8" Diameter** Case Qty: Stainless 70/box

			
Directional 239-8200 239-8200S	Rifled 239-8230 239-8230S	Multi-Massage 239-8240 239-8240S	Roto 239-8210 239-8210S
Plastic Stainless	Plastic Stainless	Plastic Stainless	Plastic Stainless
List Price 14.74 33.61	List Price 14.74 33.61	List Price 14.74 33.61	List Price 18.57 37.47

Patent # CA 5,920,025

		
Twin Roto 239-8220 239-8220S	Pulse Massage 239-8250 239-8250S	Twister 239-8260 239-8260S
Plastic Stainless	Plastic Stainless	Plastic Stainless
List Price 18.57 37.47	List Price 18.57 37.47	List Price 18.57 37.47

For GLO style internals on all Storm Jets use the prefix 230 and the last number as 8.  
**230-XXX8**

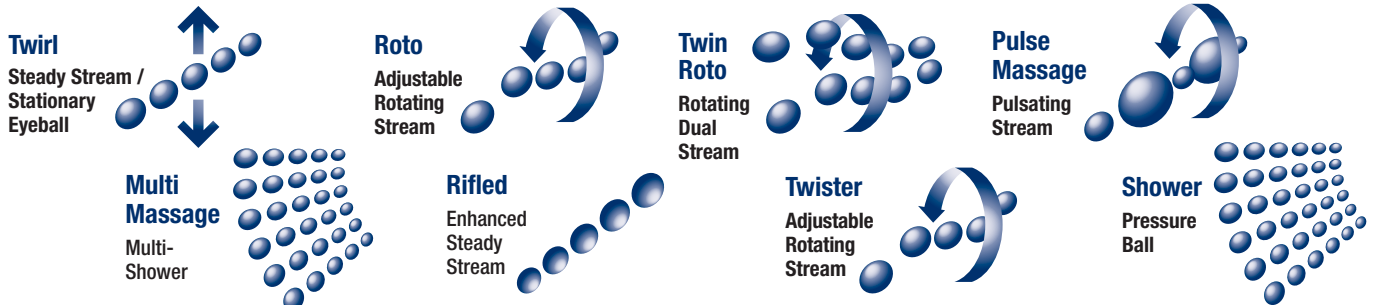
For 100% shut-off Cluster & Mini Jets use the prefix 225.  
**225-XXXX**

**Power – 5-1/4" Diameter** Case Qty: Stainless 40/box

			
Directional 239-7710 239-7710S	Rifled 239-6150 239-6150S	Multi-Massage 239-6140 239-6140S	Roto 239-6110 239-6110S
Plastic Stainless	Plastic Stainless	Plastic Stainless	Plastic Stainless
List Price 18.57 36.77	List Price 18.57 36.77	List Price 18.57 36.77	List Price 24.31 43.67

Patent # CA 5,920,025

			
Twin Roto 239-6120 239-6120S	Pulse Massage 239-6130 239-6130S	Twister 239-6160 239-6160S	Acupressure 239-6740 229-6740S
Plastic Stainless	Plastic Stainless	Plastic Stainless	Plastic Stainless
List Price 24.31 43.67	List Price 24.31 43.67	List Price 24.31 43.67	List Price 24.31 43.67



Spa Jets



Thread-in Jet Patent # US8458825 & CA2644557

## Cluster – 2-1/4" Diameter

Case Qty: 200/box



	Directional	List Price
Plastic	229-1670	4.48
Stainless	229-1670S	11.53



	Rifled	List Price
	229-0140	4.48
	229-0140S	11.53



	Multi-Massage	List Price
	229-1790	5.41
	229-1790S	11.53



	Twin Roto	List Price
	229-1780	4.48
	229-1780S	11.53

## LG Cluster – 3-1/4" Diameter

Case Qty: 100/box



	Directional	List Price
Plastic	229-0210	5.42
Stainless	229-0210S	21.91



	Rifled	List Price
	229-0220	5.42
	229-0220S	21.91



	Multi-Massage	List Price
	229-0240	5.42
	229-0240S	21.91



	Twin Roto	List Price
	229-0230	7.03
	229-0230S	19.52

## Mini – 3-1/4" Diameter

Case Qty: 180/box



	Directional	List Price
Plastic	229-8440	11.20
Stainless	229-8440S	21.13



	Rifled	List Price
	229-0190	11.20
	229-0190S	21.13



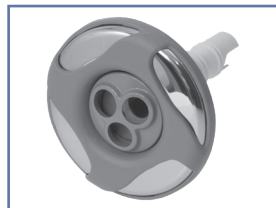
	Multi-Massage	List Price
	229-9040	11.20
	229-9040S	21.13



	Roto	List Price
	229-0320	15.02
	229-0320S	24.96



	Twin Roto	List Price
Plastic	229-8450	15.02
Stainless	229-8450S	24.96



	Pulse Massage	List Price
	229-0330	15.02
	229-0330S	24.96



	Twister	List Price
	229-9530	15.02
	229-9530S	24.96

For GLO style internals on all Storm Jets use the prefix 230 and the last number as 8.

**230-XXX8**

For 100% shut-off Cluster & Mini Jets use the prefix 225.

**225-XXXX**

## Poly – 3-5/8" Diameter (continued next page)

Case Qty: 100/box



	Directional	List Price
Plastic	229-4020	14.74
Stainless	229-4020S	30.08



	Rifled	List Price
	229-1940	14.74
	229-1940S	30.08



	Multi-Massage	List Price
	229-4090	14.74
	229-4090S	30.08



	Roto	List Price
	229-4030	18.57
	229-4030S	33.91



Thread-in Jet Patent # US8458825 & CA2644557

**Poly – 3-5/8" Diameter** *(continued from previous page)* Case Qty: 100/box



	<b>Twin Roto</b>	<b>List Price</b>
Plastic	229-4040	18.57
Stainless	229-4040S	33.91



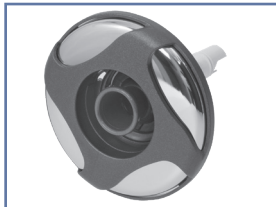
Patent # CA 5,920,025

	<b>Pulse Massage</b>	<b>List Price</b>
	229-4050	18.57
	229-4050S	33.91

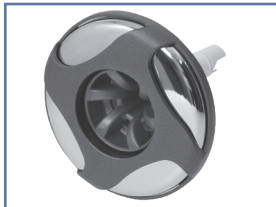


	<b>Twister</b>	<b>List Price</b>
	229-9630	18.57
	229-9630S	33.91

**LG Poly – 4 3/8" Diameter** Case Qty: Plastic 80/box Stainless 70/box



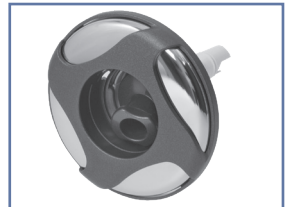
	<b>Directional</b>	<b>List Price</b>
Plastic	229-0440	14.74
Stainless	229-0440S	32.63



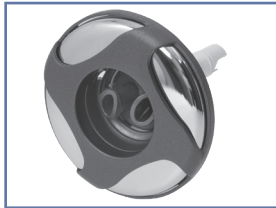
	<b>Rifled</b>	<b>List Price</b>
	229-0610	14.74
	229-0610S	32.63



	<b>Multi-Massage</b>	<b>List Price</b>
	229-0480	14.74
	229-0480S	32.63



	<b>Roto</b>	<b>List Price</b>
	229-0450	18.57
	229-0450S	36.46

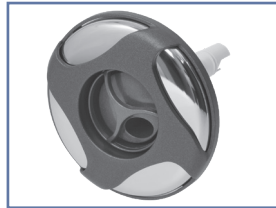


	<b>Twin Roto</b>	<b>List Price</b>
Plastic	229-0460	18.57
Stainless	229-0460S	36.46



Patent # CA 5,920,025

	<b>Pulse Massage</b>	<b>List Price</b>
	229-0620	18.57
	229-0620S	39.03



	<b>Twister</b>	<b>List Price</b>
	229-0410	18.57
	229-0410S	36.46

*For GLO style internals on all Storm Jets use the prefix 230 and the last number as 8.  
230-XXX8*

*For 100% shut-off Cluster & Mini Jets use the prefix 225.  
225-XXXX*

**Power – 5 1/4" Diameter** Case Qty: 45/box



	<b>Directional</b>	<b>List Price</b>
Plastic	239-7740	18.57
Stainless	239-7740S	46.07



	<b>Rifled</b>	<b>List Price</b>
	229-1990	18.57
	229-1990S	35.21



	<b>Multi-Massage</b>	<b>List Price</b>
	229-6170	18.57
	229-6170S	35.21



	<b>Roto</b>	<b>List Price</b>
	229-6380	24.31
	229-6380S	40.95



	<b>Twin Roto</b>	<b>List Price</b>
Plastic	229-6360	24.31
Stainless	229-6360S	40.95



Patent # CA 5,920,025

	<b>Pulse Massage</b>	<b>List Price</b>
	229-6350	24.31
	229-6350S	46.07



	<b>Twister</b>	<b>List Price</b>
	229-7680	24.31
	229-7680S	40.95



	<b>Acupressure</b>	<b>List Price</b>
	229-6720	24.31
	229-6720S	40.95



# Spa Jets / Storm Jets - Reverse Swirl

Patent # US D574,964 S

Thread-in Jet Patent # US8458825 & CA2644557

## Cluster – 2-1/4" Diameter

Case Qty: 200/box



Directional  
List Price  
Plastic / NA 229-2700S 12.10  
Stainless 229-2700S 12.10



Rifled  
List Price  
229-2710S 12.10



Multi-Massage  
List Price  
229-2730S 12.10



Twin Roto  
List Price  
229-2720S 13.70

## LG Cluster – 3-5/16" Diameter

Case Qty: 100/box



Directional  
List Price  
Plastic / NA 229-2740S 17.91  
Stainless 229-2740S 17.91



Rifled  
List Price  
229-2750S 18.47



Multi-Massage  
List Price  
229-2770S 17.91



Twin Roto  
List Price  
229-2760S 19.52

## Mini – 3-5/16" Diameter

Case Qty: 150/box



Directional  
List Price  
Plastic / NA 229-2400S 21.13  
Stainless 229-2400S 21.13



Rifled  
List Price  
229-2410S 21.90



Multi-Massage  
List Price  
229-2480S 21.13



Roto  
List Price  
229-2420S 24.96



Twin Roto  
List Price  
Plastic / NA 229-2430S 24.96  
Stainless 229-2430S 24.96



Pulse Massage  
List Price  
229-2440S 26.55



Twister  
List Price  
229-2940S 24.96

For GLO style internals on all Storm Jets use the prefix 230 and the last number as 8.  
**230-XXX8**

For 100% shut-off Cluster & Mini Jets use the prefix 225.  
**225-XXXX**

## Poly – 3-5/8" Diameter (continued next page)

Case Qty: 100/box



Directional  
List Price  
Plastic / NA 229-2800S 31.06  
Stainless 229-2800S 31.06



Rifled  
List Price  
229-2810S 30.08



Multi-Massage  
List Price  
229-2880S 30.08



Roto  
List Price  
229-2820S 33.91



Thread-in Jet Patent # US8458825 & CA2644557

**Poly – 3-5/8" Diameter** *(continued from previous page)* Case Qty: 100/box



Twin Roto List Price  
Plastic / NA 229-2830S 34.89  
Stainless 229-2830S 34.89



Patent # CA 5,920,025

Pulse Massage List Price  
229-2840S 34.89



Twister List Price  
229-2950S 33.91

For GLO style internals on all Storm Jets use the prefix 230 and the last number as 8. **230-XXX8**

For 100% shut-off Cluster & Mini Jets use the prefix 225. **225-XXXX**

**LG Poly – 4-3/8" Diameter** Case Qty: 70/box



Directional List Price  
Plastic / NA 229-2500S 33.61  
Stainless 229-2500S 33.61



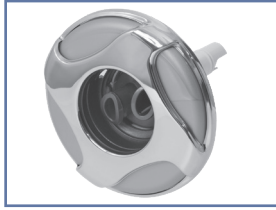
Rifled List Price  
229-2510S 32.63



Multi-Massage List Price  
229-2580S 32.63



Roto List Price  
229-2520S 37.47

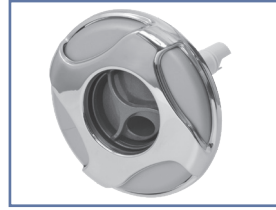


Twin Roto List Price  
Plastic / NA 229-2530S 36.46  
Stainless 229-2530S 36.46



Patent # CA 5,920,025

Pulse Massage List Price  
229-2540S 37.47



Twister List Price  
229-2960S 36.46

**Power – 5-1/4" Diameter** Case Qty: 45/box



Directional List Price  
Plastic / NA 239-7750S 36.77  
Stainless 239-7750S 36.77



Rifled List Price  
229-2620S 35.21



Multi-Massage List Price  
229-2690S 35.21



Roto List Price  
229-2630S 43.67



Twin Roto List Price  
Plastic / NA 229-2640S 43.67  
Stainless 229-2640S 43.67



Patent # CA 5,920,025

Pulse Massage List Price  
229-2650S 43.67



Twister List Price  
229-2790S 40.95



Case Qty: 45/box

Accupressure List Price  
229-2780S 40.95



# Spa Jets / Storm Jets - 6 Spoke

Patent # US D574,964 S

Thread-in Jet Patent # US8458825 & CA2644557

## Cluster – 2-1/4" Diameter

Case Qty: 200/box



	Directional	List Price
Plastic	229-1470	4.48
Stainless	229-1470S	11.53



	Rifled	List Price
	229-0130	4.48
	229-0130S	11.53



	Multi-Massage	List Price
	229-1770	4.48
	229-1770S	11.53



	Twin Roto	List Price
	229-1440	5.96
	229-1440S	12.89

## Mini – 3-5/16" Diameter

Case Qty: 180/box



	Directional	List Price
Plastic	229-8630	10.98
Stainless	229-8630S	20.70



	Rifled	List Price
	229-0180	10.98
	229-0180S	36.67



	Multi-Massage	List Price
	229-8700	10.98
	229-8700S	21.13



	Roto	List Price
	229-8640	15.02
	229-8640S	24.96



	Twin Roto	List Price
Plastic	229-8650	15.02
Stainless	229-8650S	24.96



	Pulse Massage	List Price
	229-8660	15.02
	229-8660S	26.55



	Twister	List Price
	229-9520	15.02
	229-9520S	24.96

For GLO style internals on all Storm Jets use the prefix 230 and the last number as 8.  
**230-XXX8**

For 100% shut-off Cluster & Mini Jets use the prefix 225.  
**225-XXXX**

## Poly – 3-5/8" Diameter

Case Qty: 100/box



	Directional	List Price
Plastic	229-8590	14.74
Stainless	229-8590S	30.08



	Rifled	List Price
	229-1930	14.74
	229-1930S	30.08



	Multi-Massage	List Price
	229-3240	14.74
	229-3240S	18.95



	Roto	List Price
	229-8570	18.57
	229-8570S	33.91

Patent # CA 5,920,025



	Twin Roto	List Price
Plastic	229-8580	18.57
Stainless	229-8580S	33.91



	Pulse Massage	List Price
	229-3200	18.57
	229-3200S	36.46



	Twister	List Price
	229-9620	18.57
	229-9620S	33.91






Thread-in Jet Patent # US8458825 & CA2644557

**LG Poly – 4-3/8" Diameter** Case Qty: 45/box

								
	<b>Directional</b>	<b>List Price</b>	<b>Rifled</b>	<b>List Price</b>	<b>Multi-Massage</b>	<b>List Price</b>	<b>Roto</b>	<b>List Price</b>
Plastic	239-5000	14.74	239-5050	14.74	239-5040	14.74	239-5010	18.57
Stainless	239-5000S	32.64	239-5050S	32.64	239-5040S	32.64	239-5010S	36.47

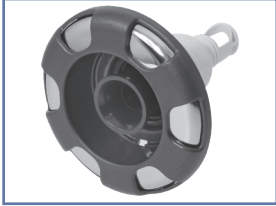



Patent # CA 5,920,025

						
	<b>Twin Roto</b>	<b>List Price</b>	<b>Pulse Massage</b>	<b>List Price</b>	<b>Twister</b>	<b>List Price</b>
Plastic	239-5020	18.57	239-5030	18.57	239-5060	18.57
Stainless	239-5020S	36.47	239-5030S	36.47	239-5060S	36.47




*For GLO style internals on all Storm Jets use the prefix 230 and the last number as 8.  
**230-XXX8***

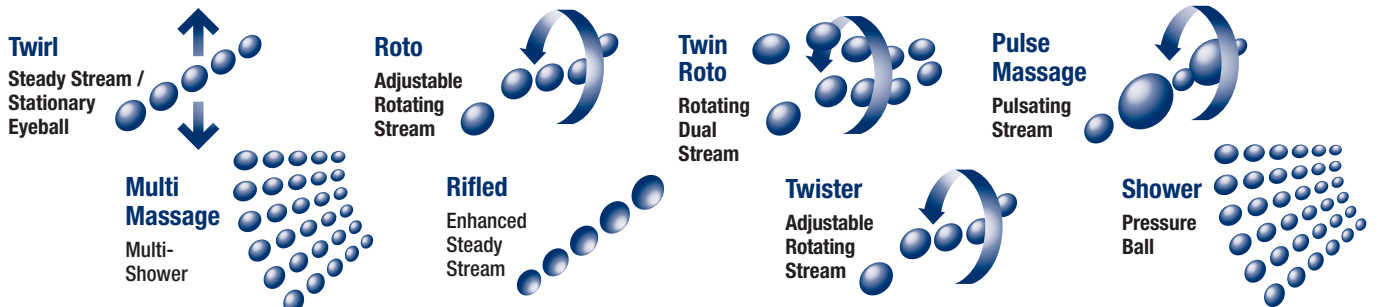
*For 100% shut-off Cluster & Mini Jets use the prefix 225.  
**225-XXXX***

**Power – 5-1/4" Diameter** Case Qty: 45/box

								
	<b>Directional</b>	<b>List Price</b>	<b>Rifled</b>	<b>List Price</b>	<b>Multi-Massage</b>	<b>List Price</b>	<b>Roto</b>	<b>List Price</b>
Plastic	229-7720	18.57	229-1980	18.57	229-7250	18.57	229-7550	24.31
Stainless	229-7720S	40.95	229-1980S	35.21	229-7250S	35.21	229-7550S	40.95

Patent # CA 5,920,025

						
	<b>Twin Roto</b>	<b>List Price</b>	<b>Pulse Massage</b>	<b>List Price</b>	<b>Twister</b>	<b>List Price</b>
Plastic	229-7560	24.31	229-7590	24.31	229-7700	24.31
Stainless	229-7560S	40.95	229-7590S	46.07	229-7700S	32.50



Spa Jets



# Spa Jets / Storm Jets - Reverse 6 Spoke (Nova)

Patent # US D574,964 S

Thread-in Jet Patent # US8458825 & CA2644557

## Cluster – 2-1/4" Diameter

Case Qty: 200/box



Directional List Price

Plastic / NA  
Stainless

229-9000S

11.53



Rifled List Price

229-9070S

12.10



Multi-Massage List Price

229-9060S

11.53



Twin Roto List Price

229-9010S

13.34

## Mini – 3-5/16" Diameter

Case Qty: 150/box



Directional List Price

Plastic / NA  
Stainless

229-9100S

21.13



Rifled List Price

229-9180S

21.13



Multi-Massage List Price

229-9140S

21.90



Roto List Price

229-9150S

24.96



Twin Roto List Price

Plastic / NA  
Stainless

229-9130S

24.96



Pulse Massage List Price

229-9160S

26.55



Twister List Price

229-9190S

24.96

## Poly – 3-5/8" Diameter

Case Qty: 70/box



Directional List Price

Plastic / NA  
Stainless

229-9200S

30.08



Rifled List Price

229-9280S

31.06



Multi-Massage List Price

229-9260S

31.06



Roto List Price

229-9210S

33.91



Twin Roto List Price

Plastic / NA  
Stainless

229-9220S

34.89



Pulse Massage List Price

229-9230S

36.46



Twister List Price

229-9290S

34.89

Patent # CA 5,920,025

For GLO style internals on all Storm Jets use the prefix 230 and the last number as 8.  
**230-XXX8**

For 100% shut-off Cluster & Mini Jets use the prefix 225.  
**225-XXXX**



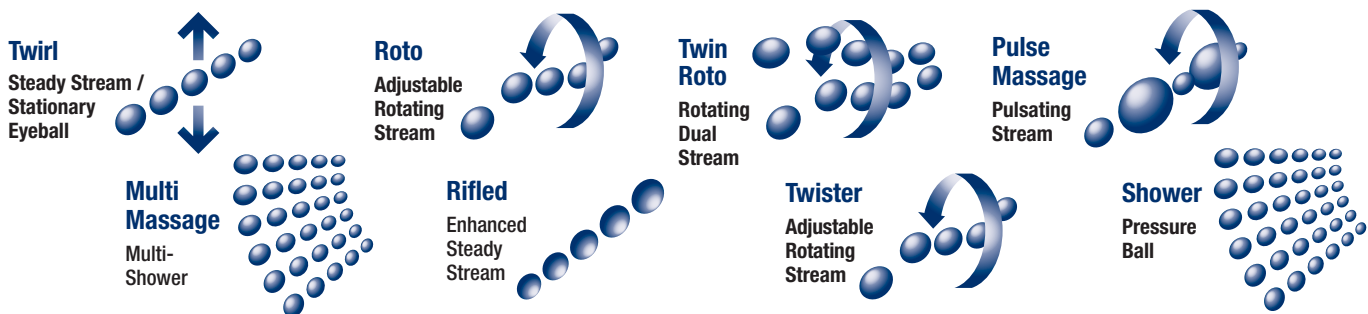
Thread-in Jet Patent # US8458825 & CA2644557

**LG Poly – 4-3/8" Diameter** Case Qty: 70/box

			
Directional List Price Plastic / NA Stainless 229-9300S 32.63	Rifled List Price 229-9370S 32.64	Multi-Massage List Price 229-9350S 32.63	Roto List Price 229-9310S 36.46
			<p>For GLO style internals on all Storm Jets use the prefix 230 and the last number as 8. <b>230-XXX8</b></p> <p>For 100% shut-off Cluster &amp; Mini Jets use the prefix 225. <b>225-XXXX</b></p>
Twin Roto List Price Plastic / NA Stainless 229-9330S 36.46	Pulse Massage List Price 229-9640S 39.03	Twister List Price 229-9380S 36.47	

**Power – 5-1/4" Diameter** Case Qty: 45/box

			
Directional List Price Plastic / NA Stainless 239-7730S 40.95	Rifled List Price 229-9480S 35.21	Multi-Massage List Price 229-9400S 35.21	Roto List Price 229-9420S 40.95
			
Twin Roto List Price Plastic / NA Stainless 229-9430S 40.95	Pulse Massage List Price 229-9460S 46.07	Twister List Price 229-9450S 40.95	Acupressure List Price 229-9490S 40.95



Spa Jets



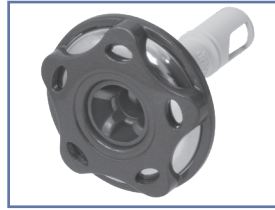
Thread-in Jet Patent # US8458825 & CA2644557

## Cluster – 2-1/8" Diameter

Case Qty: 200/box



	Directional	List Price
Plastic	229-1460	4.48
Stainless	229-1460S	11.53



	Rifled	List Price
	229-0120	4.48
	229-0120S	12.03



	Multi-massage	List Price
	229-9730	4.48
	229-9730S	11.53



	Twin Roto	List Price
	229-1430	6.08
	229-1430S	13.65

## Mini – 3-5/16" Diameter

Case Qty: 180/box



	Directional	List Price
Plastic	229-8790	11.20
Stainless	229-8790S	21.13



	Rifled	List Price
	229-0170	11.20
	229-0170S	21.13



	Multi-Massage	List Price
	229-9020	11.20
	229-9020S	21.13



	Roto	List Price
	229-8850	15.02
	229-8850S	24.96



	Twin Roto	List Price
Plastic	229-8860	15.02
Stainless	229-8860S	27.37



	Pulse Massage	List Price
	229-8870	15.02
	229-8870S	26.55



	Twister	List Price
	229-9510	15.02
	229-9510S	24.96

## Poly – 3-5/8" Diameter

Case Qty: 100/box



	Directional	List Price
Plastic	229-3250	14.74
Stainless	229-3250S	30.08



	Rifled	List Price
	229-1920	14.74
	229-1920S	30.08



	Multi-Massage	List Price
	229-3620	14.74
	229-3620S	31.18



	Roto	List Price
	229-3260	18.57
	229-3260S	33.91



	Twin Roto	List Price
Plastic	229-3270	18.57
Stainless	229-3270S	33.91



	Pulse Massage	List Price
	229-3280	18.57
	229-3280S	36.46



	Twister	List Price
	229-9610	18.57
	229-9610S	33.91

Patent # CA 5,920,025

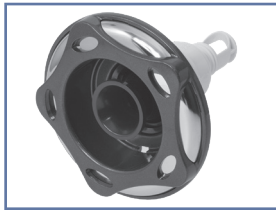
For GLO style internals on all Storm Jets use the prefix 230 and the last number as 8.  
**230-XXX8**

For 100% shut-off Cluster & Mini Jets use the prefix 225.  
**225-XXXX**



Thread-in Jet Patent # US8458825 & CA2644557

**Power – 5-1/4" Diameter** Case Qty: 45/box



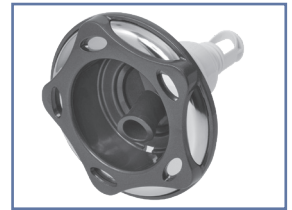
	<b>Directional</b>	<b>List Price</b>
Plastic	239-7760	18.57
Stainless	239-7760S	35.21



	<b>Rifled</b>	<b>List Price</b>
	229-1970	18.57
	229-1970S	35.21



	<b>Multi-Massage</b>	<b>List Price</b>
	229-7090	18.57
	229-7090S	35.21



	<b>Roto</b>	<b>List Price</b>
	229-7140	24.31
	229-7140S	40.96

Patent # CA 5,920,025



	<b>Twin Roto</b>	<b>List Price</b>
Plastic	229-7150	24.31
Stainless	229-7150S	40.96



	<b>Pulse Massage</b>	<b>List Price</b>
	229-7160	24.31
	229-7160S	40.96



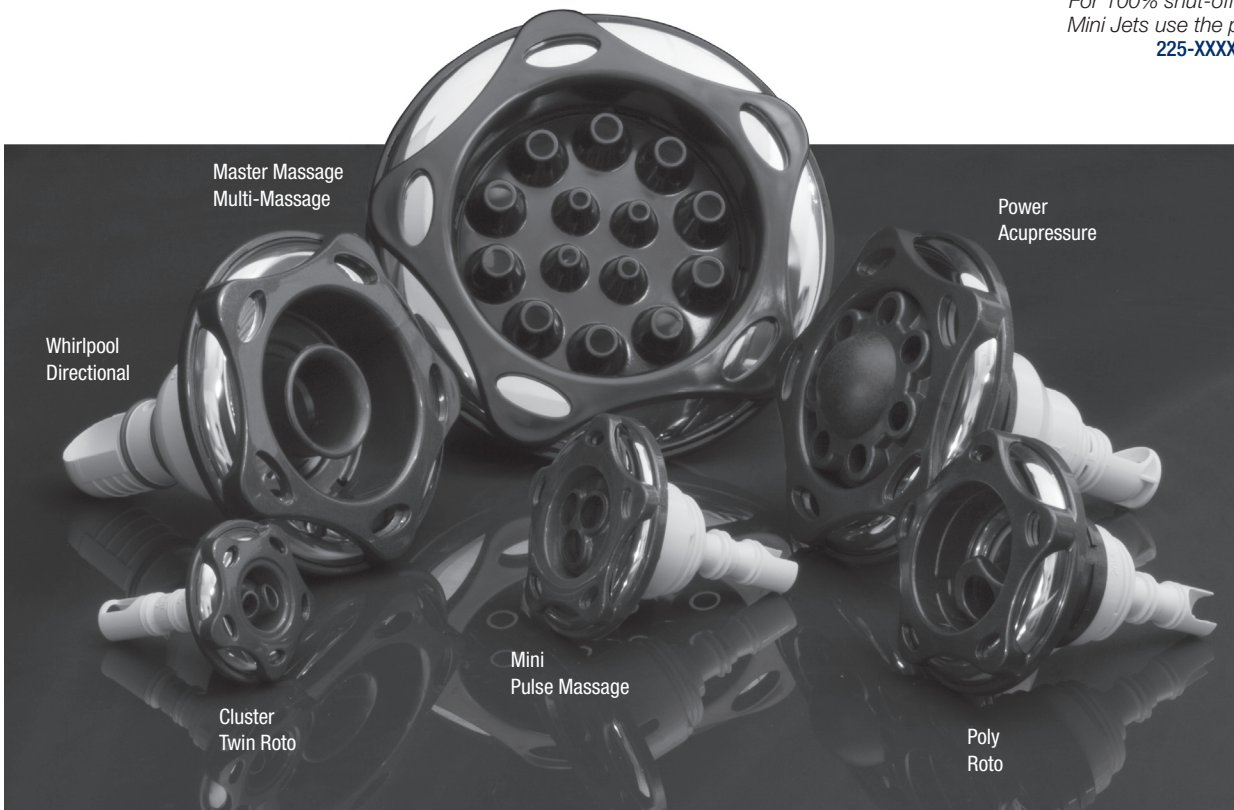
	<b>Twister</b>	<b>List Price</b>
	229-7690	24.31
	229-7690S	40.96



	<b>Acupressure</b>	<b>List Price</b>
	229-6710	24.31
	229-6710S	40.96

*For GLO style internals on all Storm Jets use the prefix 230 and the last number as 8.  
**230-XXX8***

*For 100% shut-off Cluster & Mini Jets use the prefix 225.  
**225-XXXX***



Spa Jets



# Spa Jets / Storm Jets - Smooth

Thread-in Jet Patent # US8458825 & CA2644557

## Cluster – 2-1/4" Diameter Case Qty: Plastic 300/box Stainless 200/box



	<b>Directional</b>	<b>List Price</b>
Plastic	239-4300	4.48
Stainless	239-4300S	11.53



	<b>Rifled</b>	<b>List Price</b>
	239-4310	4.48
	239-4310S	11.53



	<b>Multi-massage</b>	<b>List Price</b>
	239-4320	4.48
	239-4320S	11.53



	<b>Twin Roto</b>	<b>List Price</b>
	239-4330	6.08
	239-4330S	13.13

## Mini – 3" Diameter Case Qty: Plastic 200/box Stainless 180/box



	<b>Directional</b>	<b>List Price</b>
Plastic	229-7900	11.20
Stainless	229-7920S	21.13



	<b>Rifled</b>	<b>List Price</b>
	229-0160	11.20
	229-0160S	21.13



	<b>Multi-Massage</b>	<b>List Price</b>
	239-4340	11.20
	239-4340S	21.13



	<b>Roto</b>	<b>List Price</b>
	239-4350	15.02
	239-4350S	24.96

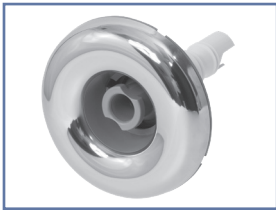


	<b>Twin Roto</b>	<b>List Price</b>
Plastic	229-7940	15.03
Stainless	229-7950S	24.96

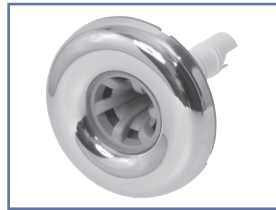


	<b>Pulse Massage</b>	<b>List Price</b>
	229-7810	14.58
	229-7800S	26.55

## LG Mini – 3-5/16" Diameter Case Qty: 120/box



	<b>Directional</b>	<b>List Price</b>
Plastic	229-0010	11.82
Stainless	229-0090S	21.74



	<b>Rifled</b>	<b>List Price</b>
	229-0150	11.82
	229-0150S	21.75



	<b>Multi-Massage</b>	<b>List Price</b>
	229-0080	11.20
	229-0080S	21.75



	<b>Roto</b>	<b>List Price</b>
	229-0310	15.03
	229-0310S	25.61



	<b>Twin Roto</b>	<b>List Price</b>
Plastic	229-7840	15.67
Stainless	229-7840S	26.88



	<b>Pulse Massage</b>	<b>List Price</b>
	229-0040	15.67
	229-0040S	27.19



	<b>Twister</b>	<b>List Price</b>
	229-2100	15.67
	229-2100S	25.61

For GLO style internals on all Storm Jets use the prefix 230 and the last number as 8.  
**230-XXX8**

For 100% shut-off Cluster & Mini Jets use the prefix 225.  
**225-XXXX**



Thread-in Jet Patent # US8458825 & CA2644557

**Poly – 3-3/8" Diameter** Case Qty: Plastic 130/box Stainless 100/box

								
	Directional	List Price	Rifled	List Price	Multi-Massage	List Price	Roto	List Price
Plastic	229-8040	14.74	229-1900	14.74	229-8280	14.74	229-8000	18.56
Stainless	229-8050S	30.09	229-1900S	30.08	229-8270S	30.08	229-8010S	33.91
Patent # CA 5,920,025								
								
	Twin Roto	List Price	Pulse Massage	List Price	Twister	List Price		
Plastic	229-8130	18.56	229-8020	21.13	229-8230	18.57		
Stainless	229-8120S	33.91	229-8030S	36.47	229-8230S	33.90		





*For GLO style internals on all Storm Jets use the prefix 230 and the last number as 8.  
230-XXX8*

*For 100% shut-off Cluster & Mini Jets use the prefix 225.  
225-XXXX*

**LG Poly – 4" Diameter** Case Qty: 60/box

								
	Directional	List Price	Rifled	List Price	Multi-Massage	List Price	Roto	List Price
Plastic	229-8160	16.05	229-9790	16.05	229-8290	16.05	229-8140	19.88
Stainless	229-8160S	32.63	229-9790S	32.63	229-8290S	32.64	229-8140S	36.47
Patent # CA 5,920,025								
								
	Twin Roto	List Price	Pulse Massage	List Price	Twister	List Price		
Plastic	229-8170	19.88	229-8150	19.88	229-9600	30.08		
Stainless	229-8170S	36.47	229-8150S	39.03	229-9600S	36.46		

**Power – 5" Diameter** *(continued next page)* Case Qty: Plastic 50/box Stainless 50/box

								
	Directional	List Price	Roto	List Price	Twin Roto	List Price	Pulse Massage	List Price
Plastic	239-7090	18.57	229-6630	24.31	229-6610	24.30	229-6650	29.43
Stainless	239-7090S	35.21	229-7600S	40.95	229-7610S	40.95	229-7740S	46.07

Patent # CA 5,920,025



# Spa Jets / Storm Jets - Smooth

Thread-in Jet Patent # US8458825 & CA2644557

## LG Power – 5-1/2" Diameter *(continued from previous page)*

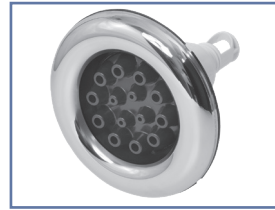
Case Qty: 35/box



Directional  
List Price  
Plastic / NA 239-0900S 36.47  
Stainless



Rifled  
List Price  
229-6850S 36.47



Multi-Massage  
List Price  
229-7330S 36.47



Roto  
List Price  
229-7310S 42.22



Twin Roto  
List Price  
Plastic / NA 229-7320S 42.22  
Stainless



Pulse Massage  
List Price  
229-7360S 47.34



Twister  
List Price  
239-0800S 42.22

## XL Power – 6-1/2" Diameter

Case Qty: 25/box



Directional  
List Price  
Plastic / NA 239-0910S 39.04  
Stainless



Rifled  
List Price  
229-6840S 39.04



Multi-Massage  
List Price  
229-7450S 39.04



Roto  
List Price  
229-7380S 44.77



Twin Roto  
List Price  
Plastic / NA 229-7390S 44.77  
Stainless



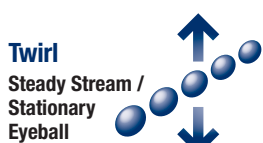
Pulse Massage  
List Price  
229-7480S 49.90



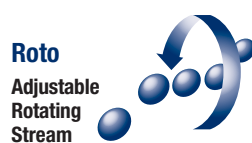
Twister  
List Price  
239-0830S 44.77

*For GLO style internals on all Storm Jets use the prefix 230 and the last number as 8.  
230-XXX8*

*For 100% shut-off Cluster & Mini Jets use the prefix 225.  
225-XXXX*



**Twirl**  
Steady Stream / Stationary Eyeball



**Roto**  
Adjustable Rotating Stream



**Twin Roto**  
Rotating Dual Stream



**Pulse Massage**  
Pulsating Stream



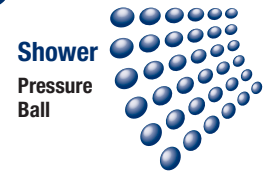
**Multi Massage**  
Multi-Shower



**Rifled**  
Enhanced Steady Stream



**Twister**  
Adjustable Rotating Stream



**Shower Pressure Ball**








Thread-in Jet Patent # US8458825 & CA2644557

## Cluster – 2-1/4" Diameter Case Qty: Plastic-300/box Stainless-200/box

			
Directional Plastic 229-1540 Stainless 229-5310S	List Price 4.48 Rifled 239-4370 239-4370S	List Price 4.48 Multi-Massage 229-9720 229-9720S	List Price 6.08 Twin Roto 229-1590 229-5320S
	List Price 11.53	List Price 11.53	List Price 12.65

## Mini – 3" Diameter Case Qty: Plastic-250/box Stainless-180/box

			
Directional Plastic 229-7920 Stainless 229-5410S	List Price 11.20 Multi-Massage 229-5480 229-5480S	List Price 11.20 Twin Roto 229-7950 229-5430S	List Price 16.63 Roto 229-0020 229-5420S
	List Price 21.13	List Price 24.96	List Price 24.96


Pulse Massage Plastic 229-0030 Stainless 229-5440S
List Price 16.63 List Price 26.54




For GLO style internals on all Storm Jets use the prefix 230 and the last number as 8.  
**230-XXX8**

For 100% shut-off Cluster & Mini Jets use the prefix 225.  
**225-XXXX**

## LG Poly – 4" Diameter Case Qty: Plastic 100/box Stainless 45/box

			
Directional Plastic 229-8160 Stainless 229-5510S	List Price 14.74 Multi-Massage 229-8290 229-5580S	List Price 14.74 Twin Roto 229-8170 229-5530S	List Price 18.57 Roto 229-8140 229-5520S
	List Price 32.63	List Price 36.46	List Price 36.46

## Power – 5" Diameter Case Qty: Plastic 50/box Stainless 50/box

			
Directional Plastic 229-7630 Stainless 229-5610 S	List Price 18.57 Pulse Massage 229-7740 229-5650S	List Price 29.43 Twin Roto 229-7610 229-5640S	List Price 24.78 Roto 229-7600 229-5630S
	List Price 35.21	List Price 40.95	List Price 40.95



### Storm Jet Flat Kraton Gaskets

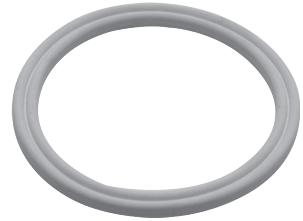
Part No.	Description	List (US \$)
<b>711-6910</b>	Mini-Storm Flat Gasket	0.64
<b>711-4410</b>	Poly-Storm Flat Gasket	0.64
<b>711-6608</b>	Power-Storm Flat Gasket	0.85



711-6910

### Storm Jet Flat EPDM Gaskets

Part No.	Description	List (US \$)
<b>806-0010</b>	Cluster Storm EPDM Flat Gasket	0.85
<b>806-0011</b>	Mini Storm EPDM Flat Gasket	1.03
<b>806-0012</b>	Poly Storm EPDM Flat Gasket	1.40
<b>806-0013</b>	Power Storm EPDM Flat Gasket	2.33



806-0011

### Storm Jet Grommet Kraton Gaskets

Part No.	Description	List (US \$)
<b>711-5140L</b>	Cluster-Storm Grommet Gasket	0.62
<b>711-6900</b>	Mini-Storm Grommet Gasket	0.64
<b>711-4400</b>	Poly-Storm Grommet Gasket	0.64
<b>711-6500</b>	Power-Storm Grommet Gasket	0.85



711-6900

### Storm Jet Grommet EPDM 55 Shore Gaskets

Part No.	Description	List (US \$)
<b>806-0018</b>	Cluster Storm 55 Shore EPDM Grommet Gasket	0.98
<b>806-0021</b>	Mini Storm 55 Shore EPDM Grommet Gasket	1.24
<b>806-0022</b>	Poly Storm 55 Shore EPDM Grommet Gasket	1.56
<b>806-0023</b>	Power Storm 55 Shore EPDM Grommet Gasket	2.84



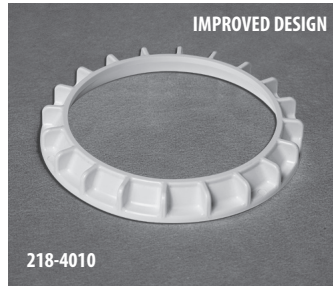
806-0021

### Storm Jet Grommet Silicone 45 Shore Gaskets

Part No.	Description	List (US \$)
<b>806-0060</b>	Cluster Storm Silicone 45 Shore Grommet Gasket	0.98
<b>806-0061</b>	Mini Storm Silicone 45 Shore Grommet Gasket	0.94
<b>806-0062</b>	Poly Storm Silicone 45 Shore Grommet Gasket	1.56
<b>806-0063</b>	Power Storm Silicone 45 Shore Grommet Gasket	2.84



806-0061



**Storm Jet Self-Alignment Rings**

Part No.	Description	Case Quantity	List (US \$)
<b>218-5150</b>	Cluster-Storm Self-Alignment Ring	500	0.79
<b>718-6960</b>	Mini-Storm Self-Alignment Ring	700	1.01
<b>218-4010</b>	Poly-Storm Self-Alignment Ring - Improved Design	500	1.03
<b>218-6680</b>	Power-Storm Self-Alignment Ring - Regular	160	2.87
<b>218-6680T</b>	Power-Storm Self-Alignment Ring - Thin	160	2.87

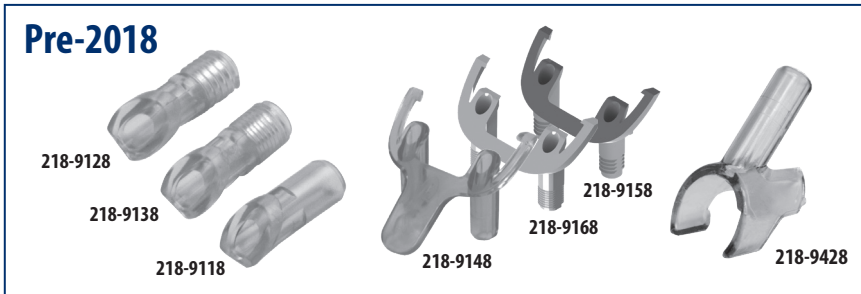
**Storm Jet Nozzle Reducer**

Part No.	Description	Case Quantity	List (US \$)
<b>217-0047</b>	Mini-Storm Jet Nozzle Reducer - 1/4" Orifice	12	0.41
<b>217-0057</b>	Poly-Storm Jet Nozzle Reducer - 1/4" Orifice	12	0.41
<b>218-9460</b>	GLO LED Clip for Cluster Storm Body	-	0.41

**NEW!**



**Pre-2018**



**Storm Jet Glo Components**

Part No.	Description	Case Quantity	List (US \$)
<b>218-9118</b>	Glo Tube, Smooth Barb	--	0.31
<b>218-9128</b>	Glo Tube, 3/8"-16 (Sloan Style)	--	0.31
<b>218-9138</b>	Glo Tube, 1/8" MPT (J-Style)	--	0.31
<b>218-9148</b>	Glo Clip, Smooth Barb (Mini / Poly only)	--	0.58
<b>218-9158</b>	Glo Clip 3/8" -16 MPT (Sloan Style) (Mini / Poly only)	--	0.58
<b>218-9168</b>	Glo Clip 1/8" MPT (J-Style) (Mini / Poly only)	--	0.58
<b>218-9428</b>	Glo Saddle, Smooth Barb	--	0.41
<b>218-9438</b>	Glo Saddle, (Sloan Style)	--	0.41
<b>218-9448</b>	Glo Saddle, (J Style)	--	0.41



**Storm Hand-Held Jet**

Part No.	Description	Case Quantity	List (US \$)
<b>229-3357</b>	Poly-Storm Thread-In Hand-Held Jet - 5-Scallop	1	116.82
<b>229-7757</b>	Power-Storm Thread-In Hand-Held Jet - 5-Scallop	12	136.28



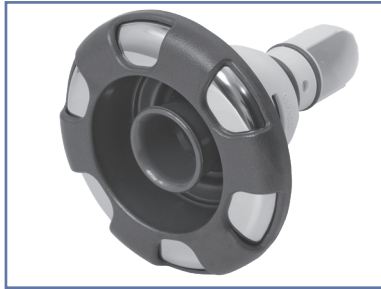
# Spa Jets / Whirlpool Jets

## 5 Scallop



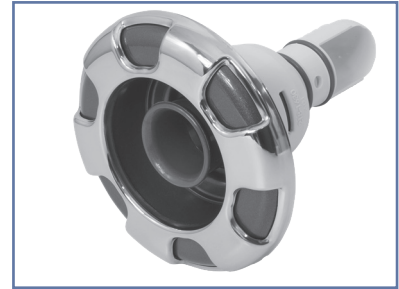
Whirlpool	List Price
Adjustable 229-5710S	49.05
Non-Adj. 229-5800S	43.35

## 6 Spoke



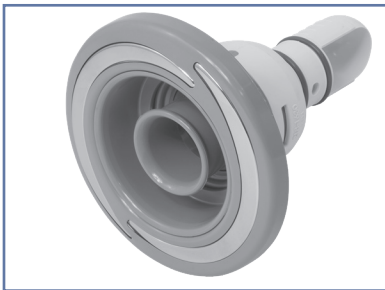
Whirlpool	List Price
229-2090S	49.05
229-2000S	43.35

## Reverse 6 Spoke



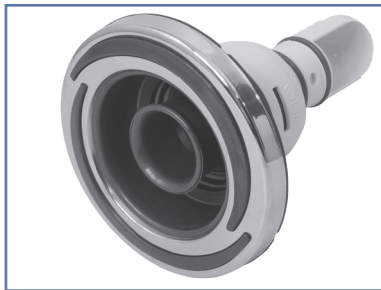
Whirlpool	List Price
239-5080S	54.73
239-5090S	49.03

## Eclipse



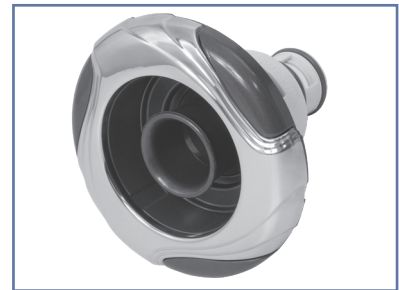
Whirlpool	List Price
Adjustable 239-0150S	54.73
Non-Adj. 239-1750S	49.03

## Reverse Eclipse



Whirlpool	List Price
239-1740S	54.73
239-1750S	49.03

## Luxe



Whirlpool	List Price
239-0020S	54.73
239-0010S	49.03

## Swirl



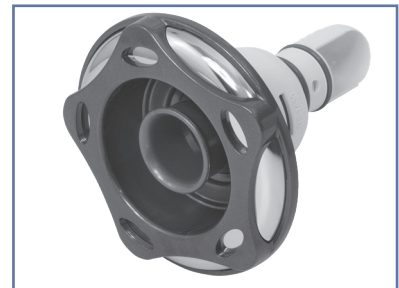
Whirlpool	List Price
Adjustable 229-3020S	47.63
Non-Adj. 229-3040S	42.09

## Reverse Swirl



Whirlpool	List Price
229-2900S	53.14
229-2910S	47.61

## Revo



Whirlpool	List Price
229-3050S	47.63
229-3060S	42.09

## Smooth



Whirlpool	List Price
Adjustable 229-2060S	47.63
Non-Adj. 229-2030S	42.09

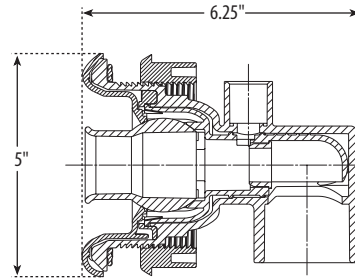
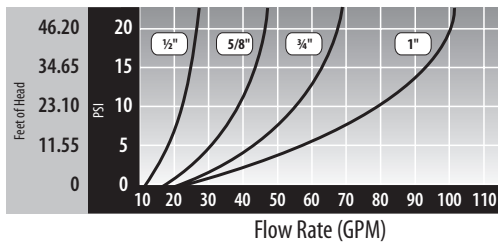
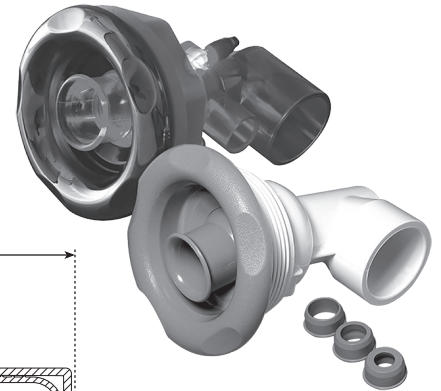
Continued next page.



**Whirlpool Jets - Specifications**

**FEATURES:**

- Adjustable flow control
- Large 1 1/2" socket intake
- Available in smooth face and 5-Scallop escutcheons
- Four water nozzle sizes to choose from: 1/2" - 5/8" - 3/4" and 1" (see flow chart)
- Self-alignment ring available for use without silicone (optional)
- Universal on/off control (on = counter clockwise / off = clockwise)
- Available as Glo Jets



**Whirlpool Thread-In Jet Body Assemblies**

Part No.	Description	Case Quantity	List (US \$)
<b>228-2000</b>	Thread-In Body - with Flat Gasket - 1 1/2" S x 1/2" S	25	16.34
<b>228-2000G</b>	Thread-In Body - with Grommet Gasket - 1 1/2" S x 1/2" S	25	16.34
<b>228-2010</b>	Thread-In Body - with Flat Gasket - 1" S x 1/2" S	25	16.34
<b>228-2010G</b>	Thread-In Body - with Grommet Gasket - 1" S x 1/2" S	25	16.34
<b>228-2130</b>	Thread-In Same Side Body - with Flat Gasket - 1 1/2" S x 1/2" S	25	16.34
<b>228-2130G</b>	Thread-In Same Side Body - with Grommet Gasket - 1 1/2" S x 1/2" S	25	16.34

**Note:** For Glo Whirlpool Jet bodies, change the last number to 8. ie: 228-2008

**Whirlpool Thread-In Jet Internals**

Part No.	Description	Case Quantity	List (US \$)
<b>229-2020</b>	Thread-In Non-Adjustable - 5-Scallop	45	27.50
<b>229-2030</b>	Thread-In Non-Adjustable - Smooth	45	27.50
<b>229-2030S</b>	Thread-In Non-Adjustable - Stainless Steel	45	42.09
<b>229-2050</b>	Thread-In Adjustable - 5-Scallop	45	33.06
<b>229-2060</b>	Thread-In Adjustable - Smooth	45	33.06
<b>229-2060S</b>	Thread-In Adjustable - Stainless Steel	45	47.63

**Note:** For Glo Whirlpool Internals, change the part number prefix to 230-xxxx.

**Whirlpool Accessories**

Part No.	Description	Case Quantity	List (US \$)
<b>223-0010</b>	Air Check Valve Adapter - 3/8" SB x 1/2" Spigot	600	2.42



Spa Jets

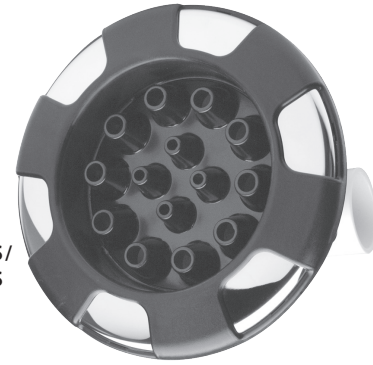


## Spa Jets / Master Massage Jets

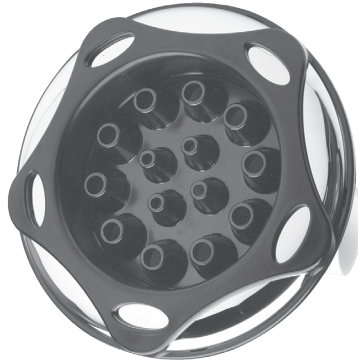
### FEATURES:

- Extra large 7 1/2" construction
- Available with adjustable flow control
- Easy through-wall installation
- 3/4" nozzle = 75 GPM flow
- Two ball bearings for added jet life
- 1 1/2" S x 1 1/2" S plumbing

For GLO style internals on all Storm Jets use the prefix 235 and the last number as 8.  
235-XXX8



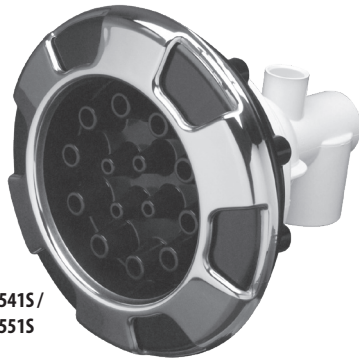
210-7180S /  
210-8290S



210-7170S /  
210-8280S



235-7158S /  
235-8168S



224-9541S /  
224-9551S



210-7130S /  
210-8270S

### Master Massage Jets

Part No.	Description	Style	Case Quantity	List (US \$)
210-8290S	Non-Adjustable Jet Assembly – 1 1/2" S x 1/2" S	6-Spoke - Stainless Steel	10	101.09
210-7180S	Adjustable Jet Assembly – 1 1/2" S x 1/2" S	6-Spoke - Stainless Steel	10	123.40
210-8280S	Non-Adjustable Jet Assembly – 1 1/2" S x 1/2" S	Revo - Stainless Steel	10	103.11
210-7170S	Adjustable Jet Assembly – 1 1/2" S x 1/2" S	Revo - Stainless Steel	10	123.40
210-8270S	Non-Adjustable Jet Assembly – 1 1/2" S x 1/2" S	Swirl - Stainless Steel	10	101.09
210-7130S	Adjustable Jet Assembly – 1 1/2" S x 1/2" S	Swirl - Stainless Steel	10	123.40
224-9540S	Non-Adjustable Jet Assembly – 1 1/2" S x 1/2" S	Nova - Stainless Steel	10	97.23
224-9550S	Adjustable Jet Assembly – 1 1/2" S x 1/2" S	Nova - Stainless Steel	10	97.23
235-8160	Non-Adjustable Jet Assembly – 1 1/2" S x 1/2" S	5-Scallop	10	96.15
235-7150	Adjustable Jet Assembly – 1 1/2" S x 1/2" S	5-Scallop	10	88.26
210-8160S	Non-Adjustable Jet Assembly – 1 1/2" S x 1/2" S	Smooth - Stainless Steel	10	96.15
210-7150S	Adjustable Jet Assembly – 1 1/2" S x 1/2" S	Smooth - Stainless Steel	10	118.61
210-4400S	Non-Adjustable Jet Assembly – 1 1/2" S x 1/2" S	Orion - Stainless Steel	10	103.85
210-4410S	Adjustable Jet Assembly – 1 1/2" S x 1/2" S	Orion - Stainless Steel	10	126.21

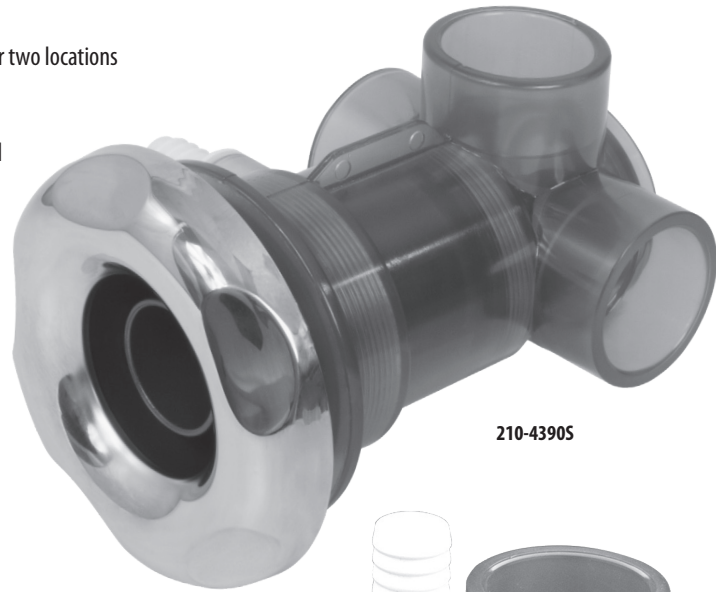
**Note:** For Glo Massage Jet, change the part number prefix to 235-xxxx.



## Spa Jets / Turbo Jet

### FEATURES:

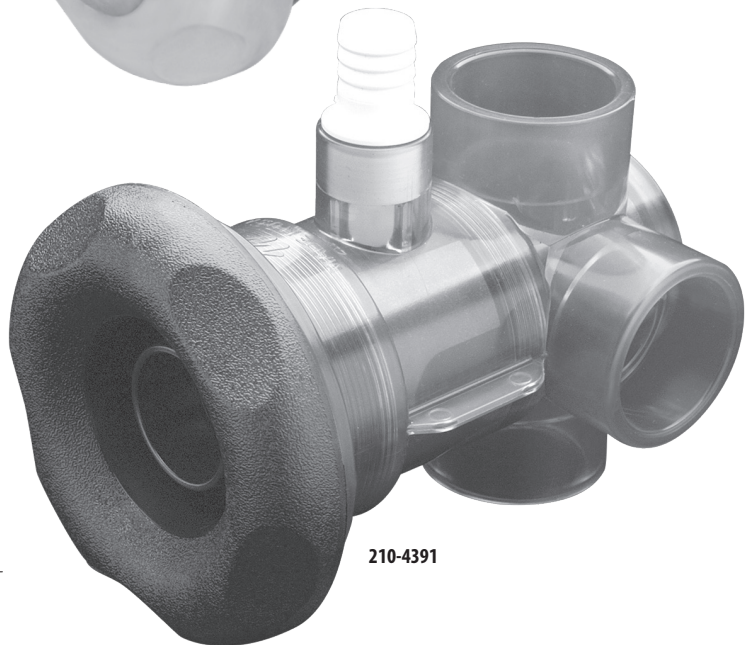
- Works as a valve to divert water to one or two locations
- Works as a high volume whirlpool jet
- Comes with a built in check valve
- Plumbing size is 1 1/2" S x 2" Spigot for all water ports and 3/4 RB air port



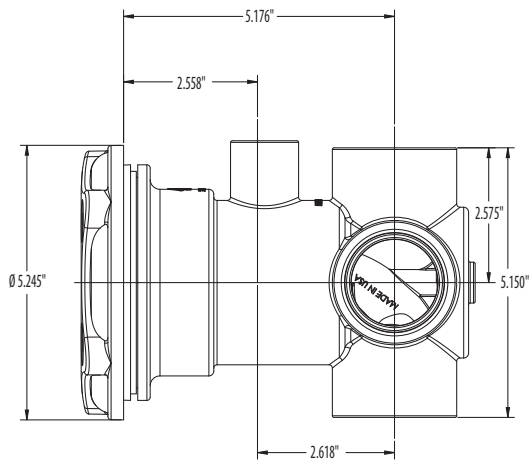
210-4390S



218-4360

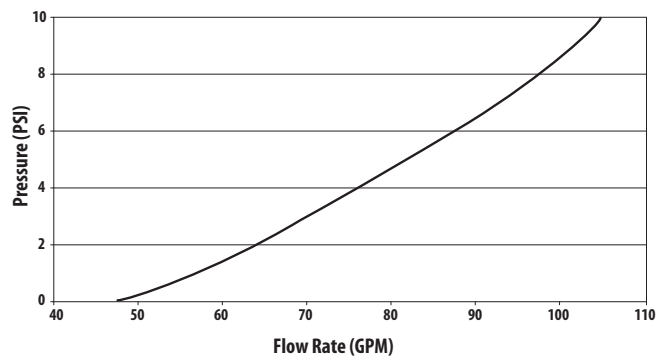


210-4391



NEW HOLE SAW SIZE - 3.25"

Turbo Jet Performance



### Turbo Jet

Part No.	Description	Case Quantity	List (US \$)
<b>210-4390</b>	1 1/2" S x 2" Spigot Water x 3/4" RB Air - 5 1/4" Flange Diameter	20	78.32
<b>210-4390S</b>	1 1/2" S x 2" Spigot Water x 3/4" RB Air - 5 1/4" Flange Diameter - Stainless Steel	20	92.39
<b>218-4360</b>	Turbo Jet Wrench	--	4.36



## Spa Jets / **OVO Swim Jet**

### FEATURES:

- Extra wide 6 ¼" oval escutcheon
- Oval shaped eyeball
- More than 175 GPM flow
- 2" Plumbing for high volume output
- Available as LED Glo Jet

### SPECIFICATIONS:

.925" = 100 GPM

1.5" = 175 GPM

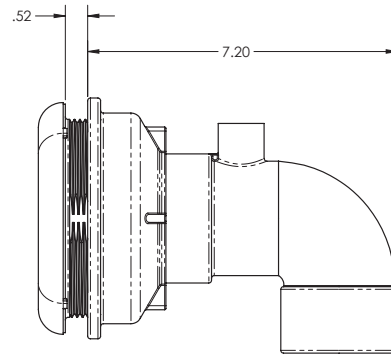
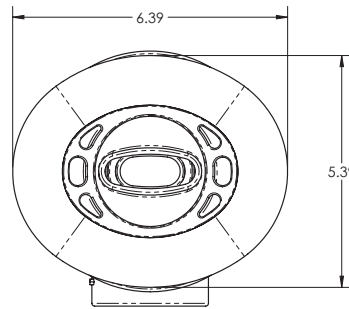
Hole saw size = 4 ¾"



**210-7918 S**



**210-7901 S**

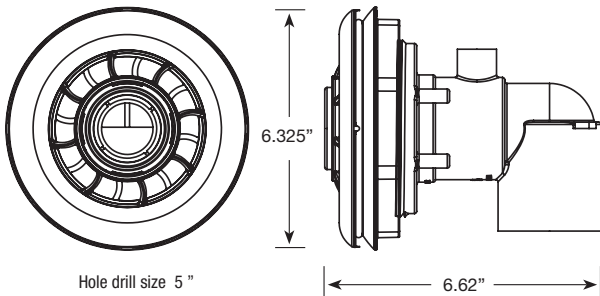


### Swim Jets - Ovo Ell Style

Part No.	Jet Type	Style	Case Qty.	List (US \$)
<b>210-7900</b>	Ovo Swim Jet, 2" S X ½" S Ell Body Assy, .925" Orifice	Plastic	6	60.31
<b>210-7900S</b>	Ovo Swim Jet, 2" S X ½" S Ell Body Assy, .925" Orifice w/Metal	Stainless Steel	6	96.49
<b>210-7908</b>	Glo Ovo Swim Jet, 2" S X ½" S Ell Body Assy, .925" Orifice	Plastic	6	68.34
<b>210-7908S</b>	Glo Ovo Swim Jet, 2" S X ½" S Ell Body Assy, .925" Orifice w/ Metal	Stainless Steel	6	104.52
<b>210-7910</b>	Ovo Swim Jet, 2" S X ½" S Ell Body Assy, 1.5" Orifice	Plastic	6	60.31
<b>210-7910S</b>	Ovo Swim Jet, 2" S X ½" S Ell Body Assy, 1.5" Orifice with Metal	Stainless Steel	6	96.49
<b>210-7918</b>	Glo Ovo Swim Jet, 2" S X ½" S Ell Body Assy, 1.5" Orifice	Plastic	6	68.34
<b>210-7918S</b>	Glo Ovo Swim Jet, 2" S X ½" S Ell Body Assy, 1.5" Orifice with Metal	Stainless Steel	6	104.52



**NEW!**

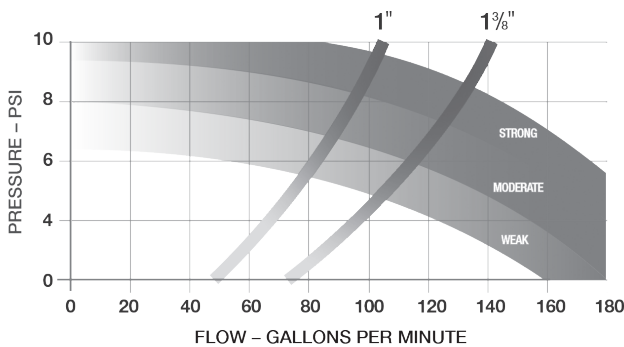


**FEATURES:**

- Through-wall jet installation
- 2" S input for optimum performance
- 1" and 1 3/8" equiv. nozzle sizes
- Nozzles can easily be exchanged
- Sixteen Entraining ports for improved performance
- Four Glo ports for LED lighting
- **Made in America**



**POWER STREAM JET FLOW CURVE**



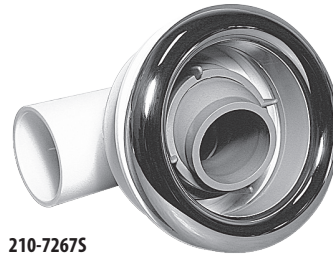
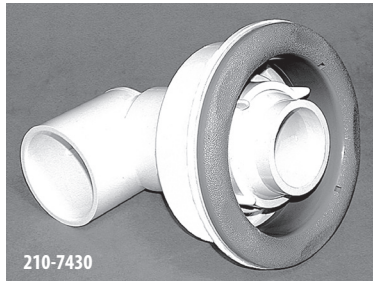
**Power Stream Swim Jet**

Part No.	Description	Case Quantity	List (US \$)
<b>210-0828S</b>	Power Stream Swim Jet 1 3/8" Nozzle with Clear/Metal	8	96.50
<b>210-0838S</b>	Power Stream Swim Jet 1" Nozzle with Clear/Metal	8	96.50
<b>210-0848S</b>	Power Stream Swim Jet 1 3/8" & 1" Nozzle with Clear/Metal (For Sampling)	8	106.81
<b>672-9540</b>	Distributor Manifold 2.5" Slip X (3) 2" Slips	25	17.51
<b>672-8050</b>	Wye Manifold 2.5" Slip X 2.5" Slip X 2.5" Slip	20	12.11

Spa Jets



## Spa Jets / Swim Jets



### Old Faithful Jets

Part No.	Description	Case Quantity	List (US \$)
<b>210-7430</b>	Ell Body - 2" S Water x 1/2" S Air - 0.925" Orifice - 90 GPM - 5-Scallop	6	45.95
<b>210-7440</b>	Ell Body - 2" S Water x 1/2" S Air - 1 1/2" Orifice - 175 GPM - 5-Scallop	6	45.95
<b>210-7270S</b>	Ell Body - 2" S Water x 1/2" S Air - 0.925" Orifice - 90 GPM - Stainless Steel	6	79.73
<b>210-7260S</b>	Ell Body - 2" S Water x 1/2" S Air - 1 1/2" Orifice - 175 GPM - Stainless Steel	6	79.73
<b>210-3910</b>	Straight Body - 2" S Water x 1/2" S Air - 0.925" Orifice - 90 GPM - 5-Scallop	6	45.95
<b>210-3920</b>	Straight Body - 2" S Water x 1/2" S Air - 1 1/2" Orifice - 175 GPM - 5-Scallop	6	45.95
<b>210-3910S</b>	Straight Body - 2" S Water x 1/2" S Air - 0.925" Orifice - 90 GPM - Stainless Steel	6	79.73
<b>210-3920S</b>	Straight Body - 2" S Water x 1/2" S Air - 1 1/2" Orifice - 175 GPM - Stainless Steel	6	79.73
<b>210-7300</b>	1/2" S Air x 2" S Water - .925" Orifice - 90 GPM	6	45.95
<b>210-7310</b>	1/2" S Air x 2" S Water - 1 1/2" Orifice - 175 GPM	6	45.95

See page 26 for Swim Spa configuration diagrams.

### Old Faithful Jet Accessories

Part No.	Description	Case Quantity	List (US \$)
<b>217-7300</b>	1" Nozzle	1	6.19
<b>217-7320</b>	1 1/2" Nozzle	1	6.19
<b>711-7300</b>	Gasket	1	5.25
<b>218-1570A</b>	Old Faithful Wrench w/ O-ring	45	19.33

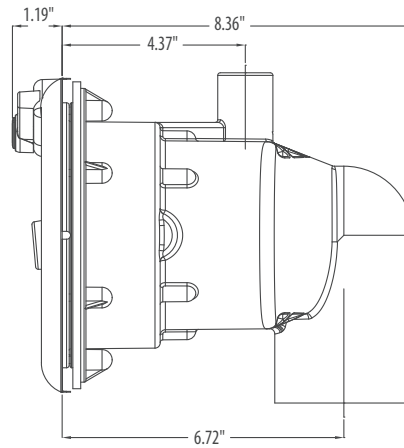
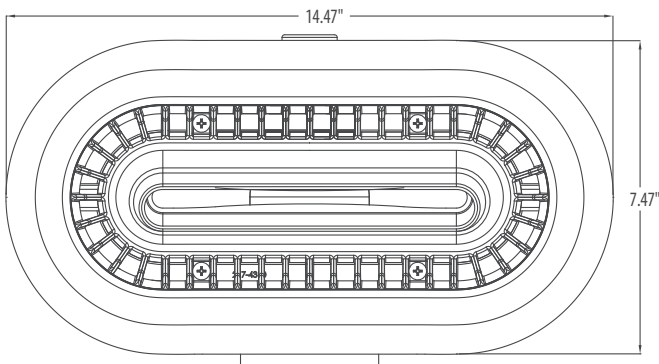


**FEATURES:**

- 8" wide eyeball
- Eyeball turrets up / down 20%
- Vent Enhancement System
- XL 2 ½" S intake
- Up to 1000 GPM input at 13 PSI



210-5100S



Spa Jets

**River Jets**

Part No.	Description	Case Quantity	List (US \$)
<b>210-5100</b>	2 ½" S x 1" Spigot	1	403.58
<b>210-5100S</b>	2 ½" S x 1" Spigot - Stainless Steel	1	479.52
<b>210-5100SL</b>	LED River Jet Assy, 2 ½" S x 1" S - Metal	1	521.78

See page 266 for Swim Spa configuration diagrams.