



Ells, Tees, & Wyes / Couplers & Accessories



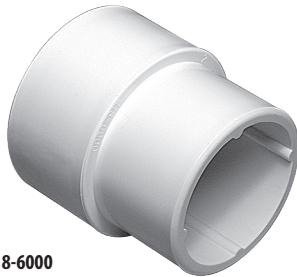
419-4100



419-4120



429-2000



418-6000



418-3000



418-1000

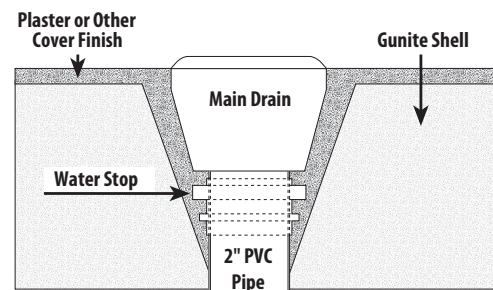
Accessories

Part No.	Description	Case Weight	Case Quantity	List (US \$)
419-4100	1" Inside Coupler	16 lbs.	300	2.87
419-4110	1 1/2" Inside Coupler	12 lbs.	100	3.23
419-4120	2" Inside Coupler	9 lbs.	60 (bulk)	3.76
429-2000	1 1/2" Fitting Extender	8 lbs.	30	6.53
429-2010	2" Fitting Extender	10 lbs.	30 (bulk)	6.86
418-1000	1/2" Pipe Extender	7 lbs.	400 (bulk)	1.60
418-2000	3/4" Pipe Extender	7 lbs.	250 (bulk)	2.60
418-3000	1" Pipe Extender	14 lbs.	280 (bulk)	2.87
418-4000	1 1/4" Pipe Extender	15 lbs.	200 (bulk)	3.06
418-5000	1 1/2" Pipe Extender	6 lbs.	50 (bulk)	3.23
418-6000	2" Pipe Extender	4 lbs.	25 (bulk)	3.62
418-7000	2 1/2" Pipe Extender	13 lbs.	25 (bulk)	4.71



Waterstops - 1", 1 1/2", 2", 2 1/2"

Waterstops eliminate leaks due to expansion and contraction of plaster and/or other finish materials.



Waterstops

Part No.	Description	Case Weight	Case Quantity	List (US \$)
429-3000	1" Waterstop	6 lbs.	100	2.38
429-3010	1 1/2" Waterstop	15 lbs.	200	2.85
429-3020	2" Waterstop	5 lbs.	50	3.49
429-3030	2 1/2" Waterstop	6.98 lbs.	50	4.94



Ells, Tees, & Wyes / Sweep Ells



411-9100

NSF



411-9110

NSF



411-9120

NSF



411-9130

NSF



411-9140

NSF



411-9150

NSF



411-9160

NSF



411-9210

NSF



411-9200

NSF

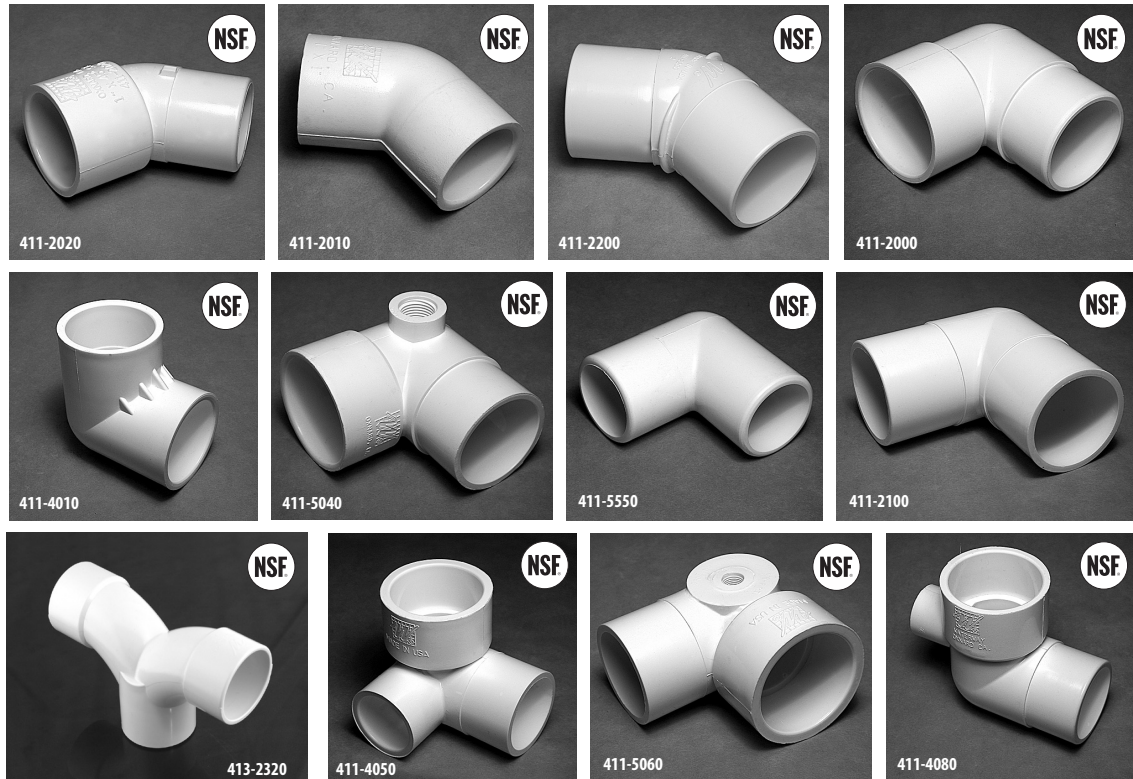
Ells / Tees / Wyes

Sweep Ells

Part No.	Description	NSF Approved	Case Weight	Case Quantity	List (US \$)
411-9100	1 1/2" Spigot x 1 1/2" S	x	8 lbs.	25	4.75
411-9110	1 1/2" S x 1 1/2" S	x	8 lbs.	25	4.75
411-9120	2" Spigot x 2" S	x	25 lbs.	60	5.34
411-9130	2" S x 2" S	x	25 lbs.	60	5.34
411-9140	2 1/2" Spigot x 2 1/2" S	x	21 lbs.	30	7.58
411-9150	2 1/2" S x 2 1/2" S	x	22 lbs.	30	7.58
411-9160	2" Spigot 90° x 2 1/2" S	x	22 lbs.	35	7.58
411-9200	3" S x 3" S	x	22 lbs.	17	11.37
411-9210	3" S x 3" Spigot	x	26 lbs.	20	11.14



Ells, Tees, & Wyes / 45° and 90° Ells



Ells / Tees / Wyes

45° and 90° Ells

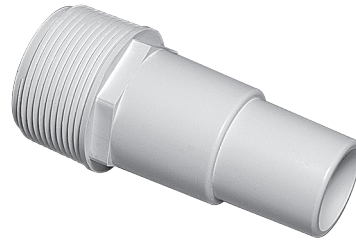
Part No.	Description	NSF Approved	Case Quantity	List (US \$)
411-2020	45° Street Ell – 1" S x 1" Spigot	x	50	4.03
411-4040	45° Street Ell – 1 1/2" S x 1 1/2" Spigot		140	5.37
411-5030	45° Street Ell – 2" S x 2" Spigot		90	6.71
411-2010	45° Ell – 1" S x 1" S	x	150	3.94
411-2200	45° Ell – 2" Spigot x 2" Spigot	x	80	7.07
411-2000	90° Street Ell – 1" S x 1" Spigot	x	50	2.76
411-4000	90° Street Ell – 1 1/2" S x 1 1/2" Spigot		130	4.67
411-5080	90° Street Ell – 2" S x 2" Spigot		60	5.99
411-4010	90° Ell – 1 1/2" S x 1 1/2" S	x	50	3.02
411-5040	90° Street Ell – 2" S x 2" Spigot x 1/2" FPT Left Side Outlet	x	60	11.70
411-5050	90° Street Ell – 2" S x 2" Spigot x 3/8" FPT Left Side Outlet		25	11.70
411-5550	90° Ell – 1 1/2" Spigot x 1 1/2" Spigot	x	50	4.67
411-2100	90° Ell – 2" Spigot x 2" Spigot	x	60	6.71
411-4050	90° Ell – 1 1/2" S x 1 1/2" Spigot x 1" S Side Outlet	x	25	6.71
411-5060	90° Street Ell – 1 1/2" S x 1 1/2" Spigot x 1/8" FPT Side Outlet	x	50	8.37
411-4080	90° Street Ell – 1 1/2" S x 1 1/2" Spigot x 1/2" S Outlet	x	50	6.52
411-9170	Ell - 2" S x 2" S x 3/4" SB		50	9.99
411-9180	Ell - 2 1/2" S x 2 1/2" S x 3/4" SB		30	12.79
413-2320	Wye 2 1/2" S x 2 1/2" S x 2 1/2" S @ 22.50 R1 20.06		15	20.60



411-6520



411-6540



417-6060



417-6080



417-6140



417-6150



417-6160

Ells / Tees / Wyes

Hose Adapters

Part No.	Description	Color	Case Weight	Case Quantity	List (US \$)
411-6520	Barb Ell - 1 1/2" MPT x 1 1/2" Hose	White	28.35 lbs.	140 (bulk)	5.20
411-6540	Smooth Ell - 1 1/2" MPT x 1 1/2" Hose	White	29.35 lbs.	150 (bulk)	5.20
417-6060	Hose Fitting Adapter - 1 1/2" MPT x 1 1/4" Hose	White	7.28 lbs.	70 (bulk)	2.53
417-6061	Hose Fitting Adapter - 1 1/2" MPT x 1 1/4" Hose	Black	7.28 lbs.	70 (bulk)	2.53
417-6067	Hose Fitting Adapter - 1 1/2" MPT x 1 1/4" Hose	Gray	7.37 lbs.	70 (bulk)	2.53
417-6080	Hose Fitting Adapter - 1 1/2" Spigot x 1 1/4" Hose	White	25.25 lbs.	230 (bulk)	2.40
417-6081	Hose Fitting Adapter - 1 1/2" Spigot x 1 1/4" Hose	Black	25.25 lbs.	230 (bulk)	2.40
417-6140	Male Smooth Adapter - 1 1/2" MPT x 1 1/2" Hose	White	24.47 lbs.	260 (bulk)	3.13
417-6141	Male Smooth Adapter - 1 1/2" MPT x 1 1/2" Hose	Black	24.47 lbs.	260 (bulk)	3.13
417-6147	Male Smooth Adapter - 1 1/2" MPT x 1 1/2" Hose	Gray	24.47 lbs.	260 (bulk)	3.13
417-6150	Male Barb Adapter - 1 1/2" MPT x 1 1/2" Hose	White	28.85 lbs.	270 (bulk)	3.13
417-6151	Male Barb Adapter - 1 1/2" MPT x 1 1/2" Hose	Black	28.85 lbs.	270 (bulk)	3.13
417-6157	Male Barb Adapter - 1 1/2" MPT x 1 1/2" Hose	Gray	28.85 lbs.	270 (bulk)	3.13
417-6160	Male Barb Adapter - 2" MPT x 1 1/2" Hose	White	51.15 lbs.	25 (bulk)	10.12
417-6161	Male Barb Adapter - 2" MPT x 1 1/2" Hose	Black	51.15 lbs.	25 (bulk)	10.12
417-6167	Male Barb Adapter - 2" MPT x 1 1/2" Hose	Gray	51.15 lbs.	25 (bulk)	10.12