

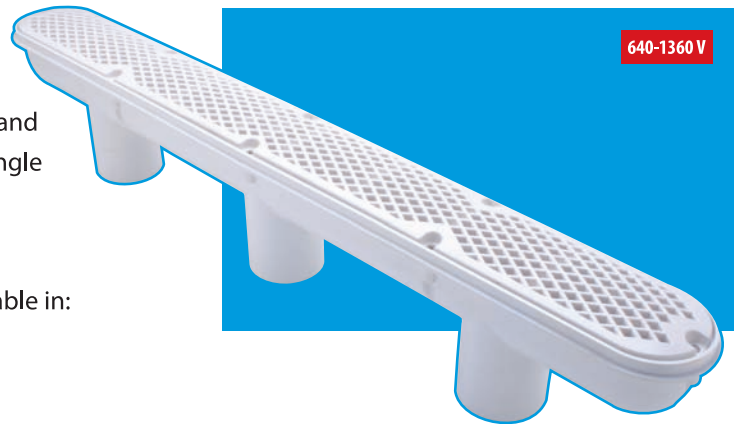


Concrete Diamond Strip Drain

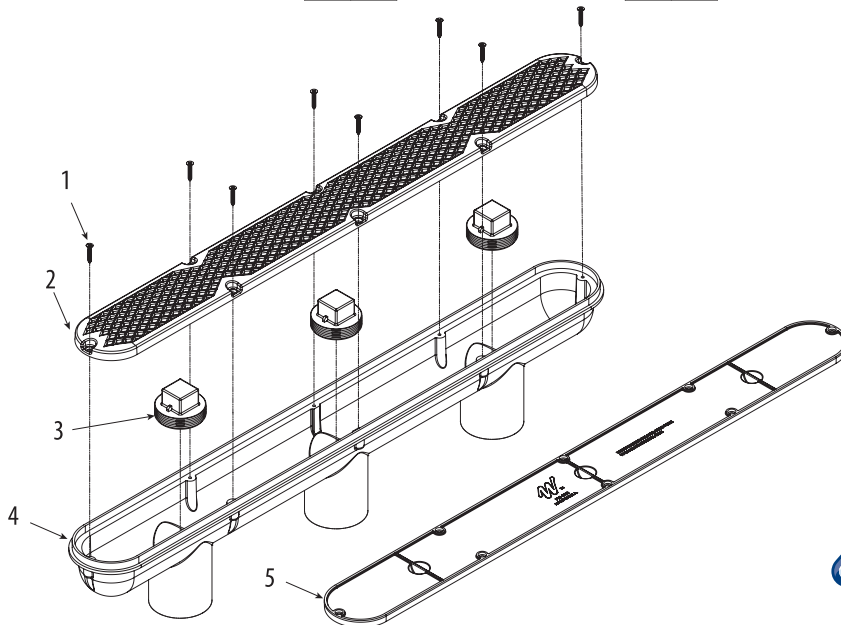
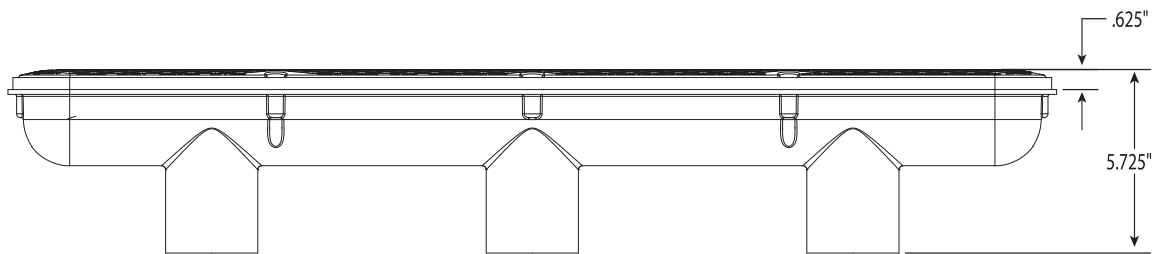
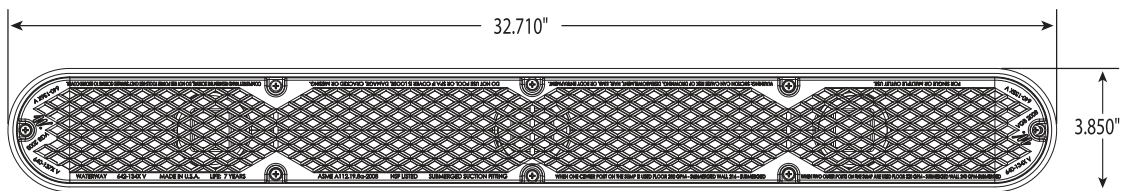
Waterway Concrete Diamond Strip Drains are compliant with the Virginia Graeme-Baker Pool and Spa Safety Act (ASME A112.19.8-2007 and ASME A112.19.8a-2008) and are NSF Certified. They are designed for single or multiple drain use. This strip drain assembly includes grate, plugs, 3-port sump, cover, and stainless steel screws.

The Waterway 640-136x V series Concrete Diamond Strip Drain is available in:

- White
- Gray



| Model No. | Description | Size | Total Open Area Square Inches | Floor Flow Rate GPM | Wall Flow Rate GPM | Flow Rate GPM @ 1.5 ft/sec |
|------------|------------------------------|------|-------------------------------|-------------------------------------|-------------------------------------|----------------------------|
| 640-136x V | Concrete Diamond Strip Drain | 32" | 24 | 280 @ 3.75 ft/sec (one port center) | 216 @ 2.89 ft/sec (one port center) | 110 |
| 640-136x V | Concrete Diamond Strip Drain | 32" | 24 | 320 @ 4.29 ft/sec (two ports) | 240 @ 3.22 ft/sec (two ports) | 110 |



| Item No. | Part No. | Description |
|----------|------------|---------------------------|
| 1 | 819-1031 | #8 x 1" Screw |
| 2 | 642-134x V | 32" Diamond Pattern Grate |
| 3 | 715-9910 | 2" Pipe Plug |
| 4 | 642-1320 | 32" 3-Port Plaster Sump |
| 5 | 715-1360 | 32" Plaster Cover/Plug |

