



SIDE MOUNT HIGH RATE SAND FILTER

ULTRACLEAN PRO SAND FILTER OWNER'S MANUAL

UltraClean Pro Sand Filters are designed for in-ground applications and feature hefty corrosion-proof polymeric bodies and extra-large sand-holding capacity. UltraClean Pro filters will provide clear, sparkling water with trouble-free operation and only minimal maintenance.

Part Number	Tank Diameter Inches	Effective Filtration Area Ft ²	Filtration & Backwash Flow Rate GPM	Maximum Working Pressure PSI	Required Clearance (Inches)		Media Required #20 Silica Sand Lbs.
					Access Side	Above	
FS026S	26	3.5	70	50	18	18	400
FS032S	32	5.0	100	50	18	18	600

INSTALLATION INSTRUCTIONS (FOR POOL USE ONLY)

IMPORTANT: Install filter in final position. Cover laterals with approximately 10 gallons of water prior to adding sand (See Fill Chart). Failure to do so may result in damage to internal lateral components.

1. Remove Access Dome (#9), Access Dome Clamp with Nuts & Bolts (#20), and Basket Assembly (#24 - which includes Basket Guide #6, Disbursement Basket Cap #7, and Disbursement Basket #11), which stay snapped together.

2. Assemble Waterway Slide Valve to filter. Lubricate the o-rings first (silicone lubricant is recommended). Align the valve pipe connections and the O-rings in place, with the two openings in the side of the filter tank and press firmly. Secure the assembly to the tank connections with the bulkhead lock nuts. **Do not over-tighten.**

3. Place Sand Cap (#25) into 2½" Inlet Assembly (#4) PVC pipe so as to avoid getting sand into the internals. Remember to add approximately 10 gallons of water prior to adding white #20 Silica Sand.

4. Fill filter body with sand according to Sand Fill Chart. Clean all debris from filter body flange after adding sand.

5. Remove Sand Cap (#25). Place Basket Assembly (#24) into 2½" Inlet Assembly (#4), making sure Screen Mesh & Bleeder Hose (#15 & #10), slides straight through. Place Sand Fill Cap (#25) loose into Basket Assembly (#23) or any safe location.

6. Put O-Ring (#19) onto bottom of Access Dome Cover (#9). Place on top of filter body flange. Slide Dome Clamp (#20) around top filter body flange and Access Dome Cover. Insert nuts and tighten bolts in parallel (evenly on both sides) to within a ¼" gap between clamps.

7. Insert and hand tighten Pressure Gauge (#22) onto Access Dome Cover (#9).

IMPORTANT: Open Air Bleeder Plug (#18) before starting system. After a steady stream of water comes out of the Air Bleeder Plug close the Air Bleeder Plug.

SYSTEM START UP

1. Be sure correct amount of filter sand is in filter tank (see Fill Chart).

2. For **BACKWASH**, remove the yellow retainer bracket. Turn the handle clockwise, then push the handle straight down as far as it goes. Turn the handle clockwise until it stops in backwash lock position.

3. Prime and start pump, allowing tank to fill with water. Once flow is steady out waste line, run in **BACKWASH** for 2 minutes.

4. Stop the pump. Turn the valve handle counter-clockwise. Pull the handle all the way up and turn it counter-clockwise to filter lock position. Place the yellow retainer under the handle.

CLEANING INSTRUCTIONS

NOTE: When pressure gauge reading is 5 PSI or higher than original starting pressure, the filter needs to be cleaned (backwash).



Pressurized vessel. Never attempt to loosen or open any fitting or hardware Assembly while system is running. It could cause severe injury or harm to user.

1. Shut off the pump set filter Slide Valve (optional) to backwash. Set valve to DOWN position for backwashing.

IMPORTANT: To prevent unnecessary strain on piping system and valves, always shut off pump before switching filter Slide Valve (optional) positions.

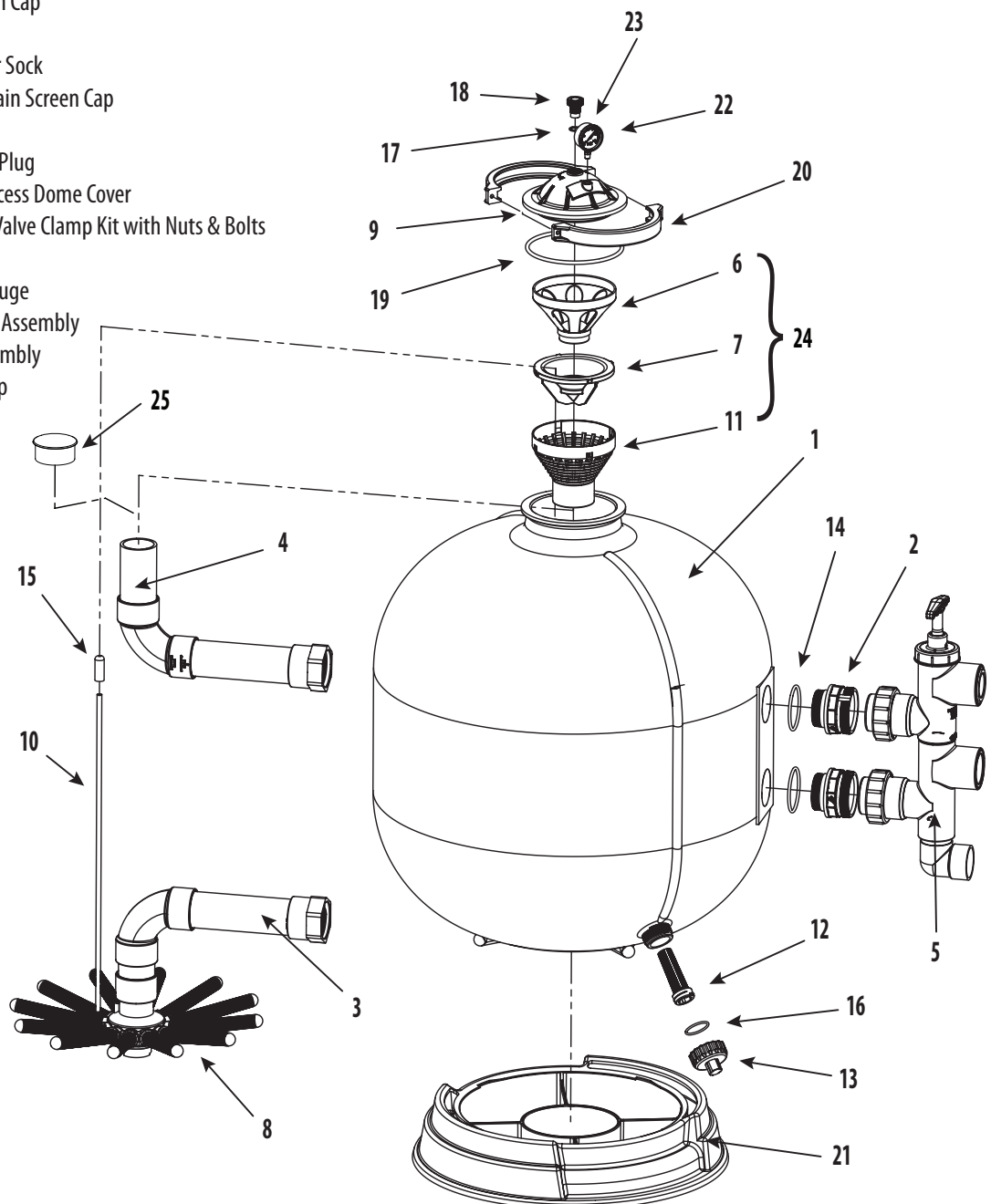
2. Start pump and backwash for approximately two to five minutes, or until water out waste line appears clean.

3. Shut off pump and set valve to UP position for filter. Turn the handle counter-clockwise to filter lock position. Place the yellow retainer under the handle for further support.

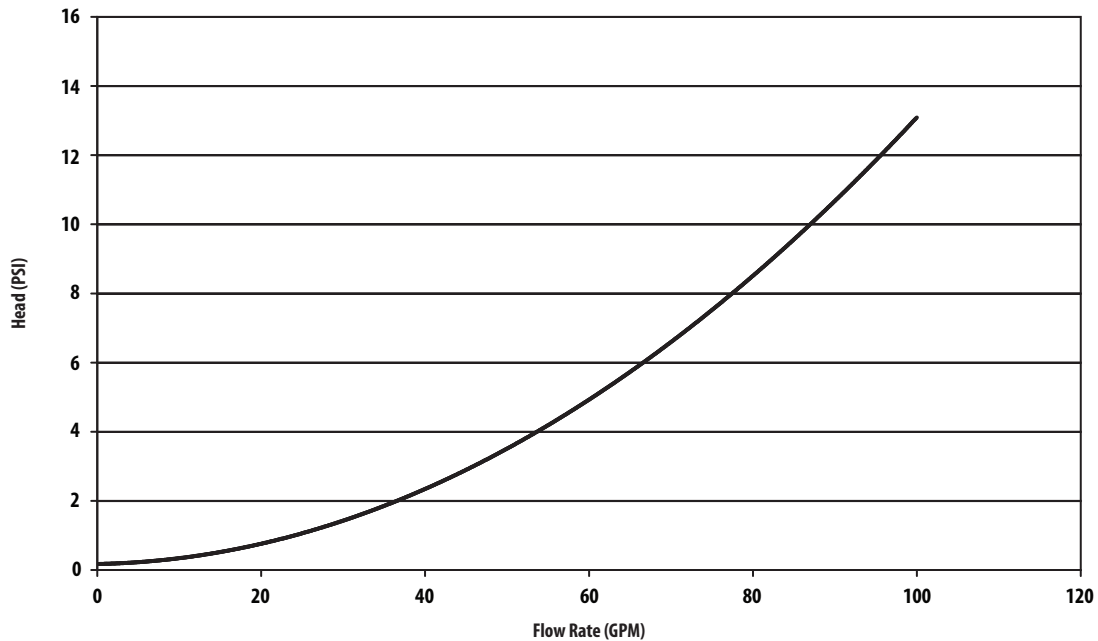
IMPORTANT: To prevent unnecessary strain on piping system and valves and to prevent a non-warranted accident, always shut off pump before switching filter control valve positions. For proper operation of system, clean pump strainer and skimmer baskets regularly. Not for buried installation.

ULTRACLEAN PRO SAND FILTER PARTS LIST

Item	Part No.	Description
1	515-2051T	32" Sand Filter Body
	515-2041T	26" Sand Filter Body
2	419-4201	2 ½" Threaded Coupler (2 required)
3	550-5410	2 ½" Outlet Assembly
4	550-5420	2 ½" Inlet Assembly
5	600-1500UCP	2 ½" Slide Valve Assembly
6	519-5310	Sand Fill Guide
7	519-5320	Diffuser Disbursement Basket Cap
8	519-5370	Twist-Lock Lateral (12 required)
9	519-5301	Access Dome Cover
10	872-2130D	Tubing - ¾" outer diameter x 32" height
11	519-5330SC	Diffuser Disbursement Basket
12	602-5310	Self-Threading Drain Screen
13	602-5321	Drain Screen Cap
14	805-0339BN50	O-Ring
15	817-0001	2" Polyester Sock
16	805-0224	O-Ring - Drain Screen Cap
17	805-0116EP	O-Ring
18	715-6011	Air Bleeder Plug
19	805-0442	O-Ring - Access Dome Cover
20	872-0046	Multi-Port Valve Clamp Kit with Nuts & Bolts
21	672-5301	Filter Base
22	830-3000	Pressure Gauge
23	600-4101	Bezel Cover Assembly
24	550-5430	Basket Assembly
25	519-5421	Sand Fill Cap



Head Loss Curve



WINTERIZATION

1. Backwash filter system completely (follow cleaning instructions).
2. Run a filter cleaning chemical through filter system (if applicable).
3. Turn pump off. Leave slide valve in backwash position (DOWN).
4. Remove Drain Screen Cap (#13) from bottom of filter tank.
5. Unscrew drain plugs located at bottom of pump trap and front of pump housing. Let water drain completely.
6. The above steps will prepare your system for winterizing. Contact your local Pool Professional for the best way to winterize your pool.

TROUBLESHOOTING

INADEQUATE FILTERING:

- Sand level too low
- Inadequately cleaned system
- Excessive dirt load
- Chemical imbalance
- Inadequate system pressure

NO WATER FLOW:

- Obstruction of suction or return line
- Clogged impeller
- Suction system air leaks
- Slice Valve Closed
- Clogged Hose Fitting
- Clogged Basket
- Dirty Sand

LIMITED WARRANTY

Waterway Plastics manufactures its products and equipment in accordance with very high standards of workmanship. We use the best materials available and maintain the highest quality procedures practical in the industry. In accordance, Waterway warrants its products as follows:

All thermoplastic molded filter bodies and rotational molded sand filter bodies have a warranty of ten years, warranted on a pro-rata life basis. If a defect becomes apparent during the first year, the body will be exchanged for a new body if the defects are determined by Waterway to be the responsibility of Waterway Plastics. If a defect becomes apparent after the first year from the date of manufacture which, in the opinion of Waterway, will require replacement, the body will be exchanged for a new tank on an adjusted service pro-rata life basis. Charges to the owner, on the pro-rata life basis, will be determined by the actual number of months installed.

Products that fail or become defective during the warranty period, except as a result

of improper installation, bad water chemistry, accidents or negligence on behalf of the owner, freezing, earthquakes, fire floods, or other acts of nature, shall be repaired or replaced at Waterway's option without charge to the owner. This process will be completed within 90 days of receipt of the defective product barring delays caused by the acquisition of component parts not manufactured at our facility.

To obtain warranty replacements or repair, defective products should be returned (transportation paid) to the place of purchase. It should include a description of the defect and the circumstances surrounding the incident or problem. Warranty applies only to OEM's and distributors of Waterway.

Warranty begins on the date of purchase. Waterway shall not be responsible for cartage, removal and/or reinstallation labor, or any other such costs incurred in obtaining warranty replacements. This warranty gives you specific legal rights. You may also have other rights which vary from state to state.



2200 East Sturgis Road, Oxnard, CA 93030 • Ph. (805) 981-0262 • Fax (805) 981-9403

www.waterwayplastics.com • waterway@waterwayplastics.com