

# ANTI-VORTEX DRAIN COVER REPLACEMENT

## TO USE ON A WATERWAY DRAIN, SUMP, OR FLANGE:



Look for the brass inserts on the piece that the new cover is to be installed on. Use the 2 machine screws (provided) to screw the new cover onto the existing piece.



## TO USE ON A DRAIN, SUMP, OR FLANGE WITHOUT BRASS INSERTS:

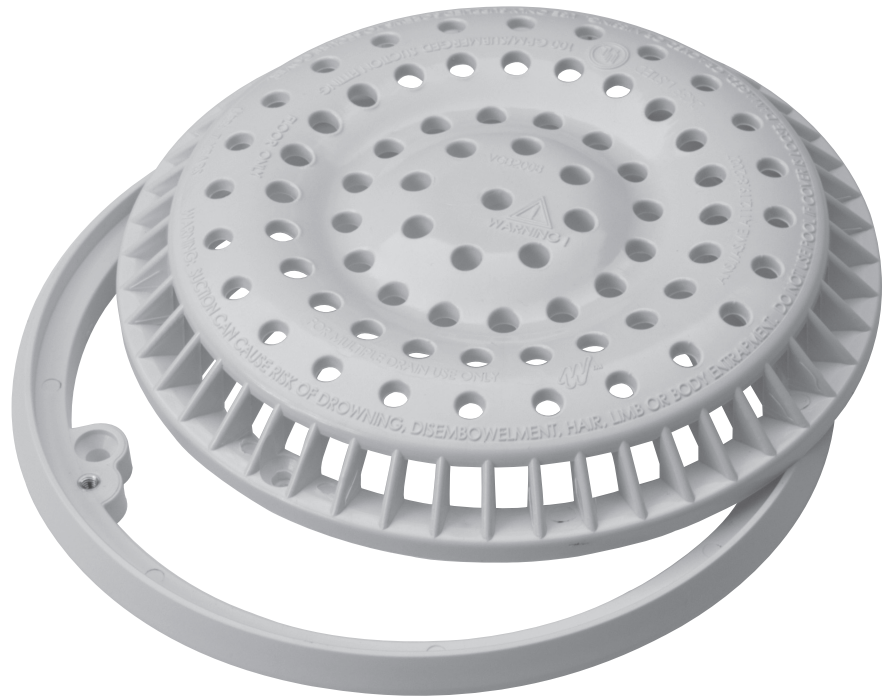
Use the 2 screws (provided) to install the new cover onto the sump or flange.



Pull-up on the new cover to make sure it is correctly installed.

Thank you for purchasing Waterway products.

Enjoy your pool!



# Waterway™

2200 East Sturgis Road, Oxnard, CA 93030 • Ph. (805) 981-0262 • Fax (805) 981-9403

[www.waterwayplastics.com](http://www.waterwayplastics.com) • [waterway@waterwayplastics.com](mailto:waterway@waterwayplastics.com)