

# ClearWater™

**HIGH RATE SAND FILTER**



**STANDARD SYSTEM WITH ONE-PIECE BASE  
OWNER'S MANUAL**

# CLEARWATER STANDARD SAND FILTER SYSTEM OWNER'S MANUAL



**WARNING: A GFCI is required. Follow national and local building and safety codes.**

Your ClearWater Standard Sand Filter System is shipped complete from Waterway, with all needed components ready for assembly and installation.

System will require a 110 Volt / 20 Amp service. **DO NOT** use extension cords. Use will void warranty on pump motor. The pool equipment should be located between the pool skimmer and return line. The filtration system should not be installed less than 2 ft. and no more than 5ft. from the pool. The ClearWater Standard Sand Filter System needs to be on a completely flat level / surface (patio block, cement slab, etc.).

Assemble filter system only after above ground pool is installed. Fill pool with water. **IMPORTANT:** Do no raise water level above pool return line or skimmer throat until installation is complete.

Open shipping carton in an upright position checking contents, as follows:

- |                            |                        |
|----------------------------|------------------------|
| 1. One-piece mounting base | 5. One fittings bag    |
| 2. One pump                | 6. One collar wrench   |
| 3. One filter              | 7. Trap assemblies     |
| 4. Two corrugated hoses    | 8. Pump to filter hose |

## INSTALLATION INSTRUCTIONS



**WARNING! READ ALL INSTRUCTIONS AND WARNING LABELS BEFORE OPERATING FILTER!**

1. Place filter with filter base on a level, secure surface. There is no need to disassemble filter or pump assemblies. Position sand filter body securely onto filter base. Align drain with drain clearance on base. Secure sand filter body to base using bolt (#18) and washer (#17) as shown. **DO NOT** over tighten.
2. Open box and remove pump and trap. Open pump trap lid and remove 2" gasket. Position gasket into end of pump trap union nut. Hand tighten union nut onto suction side of pump (Detail 2). **DO NOT** over tighten.
3. Secure pump to pump base using pin and anchor assemblies (#21) (Detail 1).
4. Remove collar assembly from filter tank. **DO NOT** lose screws. **IMPORTANT:** To prevent damage to internal filter lateral components, fill filter tank full with water prior to adding sand. With sand fill guide (#10) positioned in filter tank opening, add only recommended #20 grade silica sand (see Fill Chart). Remove sand fill guide. **IMPORTANT:** Clean and remove all debris from filter tank flange after adding sand.
5. Assure that o-ring (#9) is positioned onto multi-port throat.
6. Install multi-port valve with inlet and outlet ports facing pool. Top of internal stand pipe seats directly into multi-port valve. Push multi-port valve evenly onto

- tank flange. **NOTE:** Make sure tank flange is clear of any sand debris.
7. Install filter tank split-nut assembly (#6 & 7) by threading collar clockwise until hand tight. Then use collar wrench to tighten further (Detail 3).
  8. To use collar wrench (#5), place on collar assembly, use both hands to turn wrench  $\frac{1}{2}$  to  $\frac{3}{4}$  of a turn to secure multi-port valve to filter body (Detail 4).
  9. Position and hand tighten pump hose assembly (#29) to top inlet port. Position gasket (#21) and hand tighten onto pump (Detail 6). **DO NOT** over tighten.
  10. Hand tighten return sweep assembly (#32) to bottom outlet port. **DO NOT** over tighten.
  11. Position o-ring (#2) onto 1  $\frac{1}{2}$ " MPT x 1  $\frac{1}{2}$ " hose male smooth adapter (#26). Hand tighten onto suction side of pump trap (Detail 7).
  12. Apply Teflon tape (4 wraps ideal) to pressure gauge (#3). Thread into multi-port valve.
  13. Remove 4 hose clamps (#27) and position over end of corrugated hoses (#28). Install corrugated hose onto return sweep assembly, on multi-port valve and to pool return fitting. Tighten hose clamps. Install the other corrugated hose between 1  $\frac{1}{2}$ " MPT x 1  $\frac{1}{2}$ " hose male smooth adapter (#26) and pool skimmer fitting. Tighten hose clamps. **NOTE:** Soften hose ends with warm water to ease installation onto fittings (if necessary).
  14. Install waste adapter fitting (#1) with o-ring (#2) (Detail 5).

## SYSTEM START UP

1. Fill pool until water is halfway up length of skimmer throat.
2. Make sure pump trap is full of water. Slightly loosen trap lid to relieve pressure and allow water to fill trap. Re-tighten lid.
3. Make sure multi-port valve handle is in **Filter** position.
4. Plug pump into GFCI outlet and turn pump on. Turn two-speed pumps to high.
5. Make note of start-up pressure on gauge.
6. Checks for leaks.

## WINTERIZATION

1. Backwash filter system completely. See Cleaning Instructions.
2. Run a filter cleaning chemical through filter system as per cleaner instructions.
3. Turn pump off. Disconnect hoses from skimmer and return fitting.
4. Remove drain plug cap from bottom of filter tank. **DO NOT** remove hex drain assembly (#14). To remove Item self-threading drain screen (#14), remove drain cap (#15) and use as tool to remove.
5. Unscrew drain plugs located at bottom of pump trap and front of pump housing. Let water drain completely.
6. Disconnect filter to pump connection. Loosen union connection on discharge of pump and remove from pump. **DO NOT** lose 2" union gasket. Lift and remove pump and pump base from filter base. Store inside.

## CLEANING INSTRUCTIONS

**NOTE:** When pressure gauge reading is 5 PSI or higher than original starting pressure, the filter needs to be cleaned. The ClearWater Standard Sand Filter System features our exclusive 7-Position Multi-Port Valve, which ensures safe and simple filter maintenance.

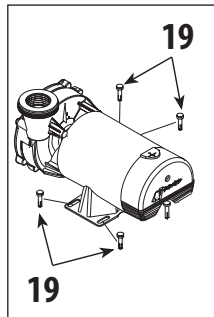
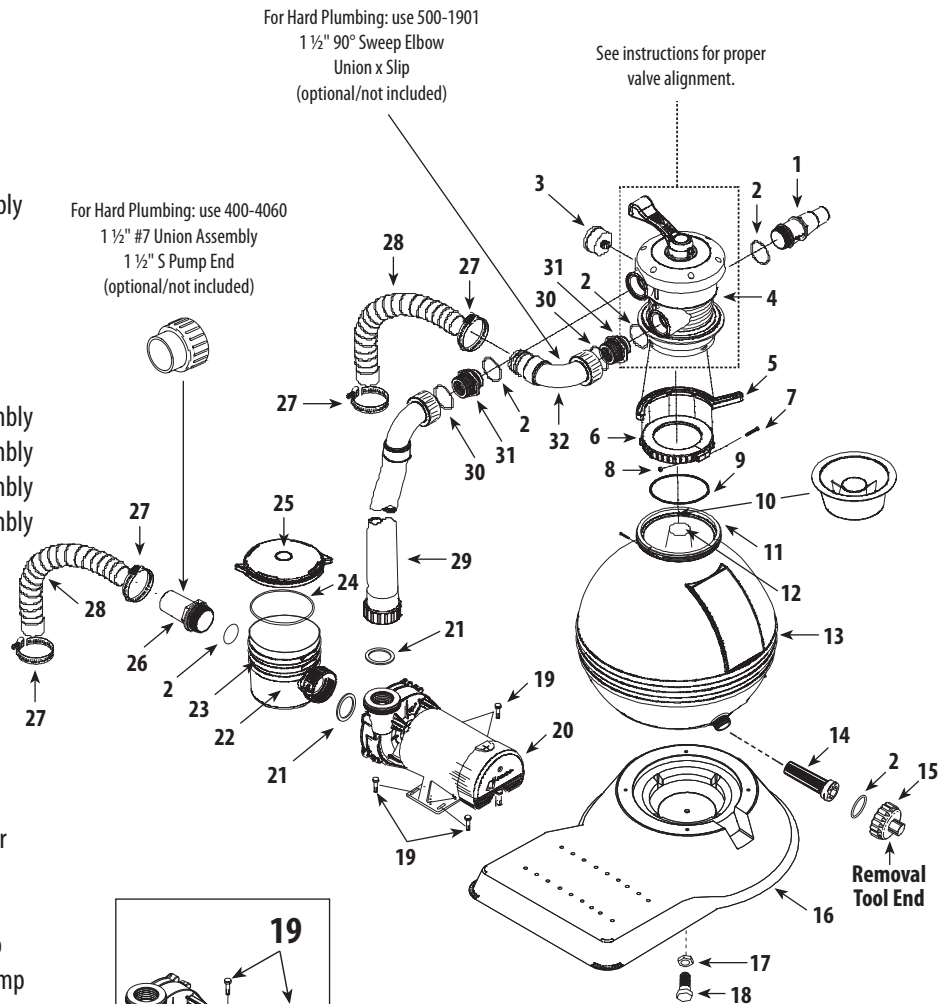


Pressurized vessel. Never attempt to loosen or open collar assembly (#6 & 7) while system is running. It could cause severe injury or harm to user. **NEVER CHANGE VALVE POSITION WITH PUMP RUNNING!**

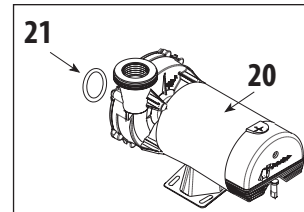
1. Turn off pump.
2. Attach backwash hose (optional) to waste port adapter.
3. Rotate multi-port valve handle to **Backwash** position. Turn pump on and run for 90 second intervals or until discharge water is clear. Turn pump off.
4. Rotate multi-port valve handle to **Rinse** position. Turn pump on for 30 seconds.
5. Repeat steps 3 & 4 until all discharge water is clear while pump is turned on.
6. Rotate multi-port valve handle to **Filter** position. Turn pump on. Valve is now in normal operating position.

# CLEARWATER STANDARD SAND FILTER SYSTEM PARTS LIST

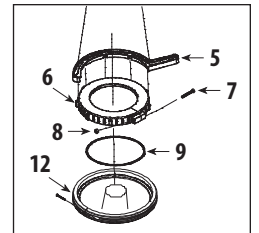
Item	Part No.	Description
1	425-1928	Waste Adapter Fitting
2	805-0224	O-Ring
3	830-3000	0-30 PSI Gauge
4	WVS003-A	Multi-Port Valve Assembly
5	505-1970	Collar Wrench
6	505-3010	Split Nut - Sand Filter Assembly
7	819-0015	Screw - 1/4" - 20 PPH x 2"
8	820-0013	Serrated Hex Nut - 1/4" - 20
9	805-0435	O-Ring
10	502-2011	Sand Fill Guide
11	505-3000	Threaded Sleeve for Split Nut
12	505-2040	16" Lateral & Manifold Assembly
	505-2050	19" Lateral & Manifold Assembly
	505-2060	22" Lateral & Manifold Assembly
	505-2080	26" Lateral & Manifold Assembly
13	515-1601	16" Sand Filter Body
	515-1901	19" Sand Filter Body
	515-2001	22" Sand Filter Body
	515-2061	26" Sand Filter Body
14	602-5311	Self-Threading Drain Screen
15	602-5321	Drain Cap
16	672-7241	One-Piece Base
17	820-0017	Flat Washer - 3/8"
18	819-0016	3/8" Bolt - 22" / 26" Sand Filter
	819-0019	3/8" Bolt - 19" Sand Filter
	819-0020	3/8" Bolt - 16" Sand Filter
19	PH1100	1 HP - 1-Speed - Hi-Flo Pump
	PH1150	1 1/2 HP - 1-Speed - Hi-Flo Pump
	PH1200	2 HP - 1-Speed - Hi-Flo Pump
	PH2100	1 HP - 2-Speed - Hi-Flo Pump
	PH2150	1 1/2 HP - 2-Speed - Hi-Flo Pump
	PH2200	2 HP - 2-Speed - Hi-Flo Pump
20	429-7300	Pin & Anchor Assembly
21	711-4010	2" Gasket
22	319-3230	6" Basket Assembly (not shown)
23	319-2170	6" Pump Trap
24	805-0436	O-Ring,
25	319-3260	6" Trap Lid
26	417-6141	1 1/2" MPT x 1 1/2" Hose Male Smooth Adapter
27	872-0010	Hose Clamp - Stainless Steel
28	872-9002	Corrugated Hose - Black
29	550-1801	16" Sand Filter Hose Assembly
	550-1811	19" Sand Filter Hose Assembly
	550-1821	22" Sand Filter Hose Assembly
	550-1831	26" Sand Filter Hose Assembly
30	711-4000	1 1/2" Gasket
31	417-4161	1 1/2" Buttress x 1 1/2" MPT
32	550-1841	Return Sweep Assembly
	810-0082-1	Instruction Sheet



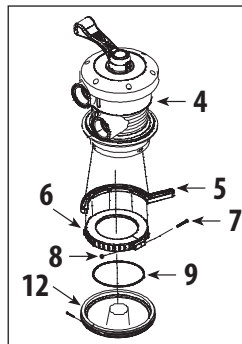
DETAIL 1



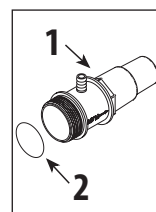
DETAIL 2



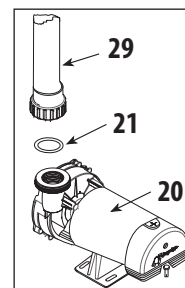
DETAIL 3



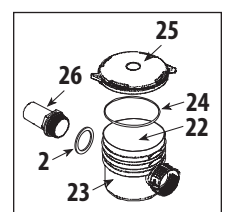
DETAIL 4



DETAIL 5



DETAIL 6



DETAIL 7

## TROUBLESHOOTING

<b>MOTOR DOES NOT START:</b>	<p>Make sure motor is plugged in. Circuit breaker in OFF position. Thermal Overload in tripped position. Wiring installation incorrect. Incorrect line voltage. Defective wiring.</p>	<b>EXCESSIVE PUMP NOISE:</b>	<p>Worn bearings. Suction line clogged. Pump incorrectly mounted. Hose fitting partially closed. Slice valve partially closed. Clogged trap basket.</p>
<b>THERMAL OVERLOAD TRIPS:</b>	<p>Low voltage. Wiring installation incorrect. Dual voltage pumps mis-wired. Inadequate ventilation.</p>	<b>INADEQUATE FILTERING:</b>	<p>Sand level too low. Inadequately cleaned system. Excessive dirt load. Chemical imbalance. Inadequate system pressure.</p>
<b>NO WATER FLOW:</b>	<p>Obstruction of suction or return line. Clogged impeller. Suction system air leaks. Slice valve closed. Clogged hose fitting. Clogged basket. Dirty sand.</p>		

**SAND FILL CHART:**  
**Model FS016 - 50 lbs.**  
**Model FS019 - 100 lbs.**  
**Model FS022 - 150 lbs.**  
**Model FS026 - 200 lbs.**

## CHLORINATOR & BROMINATOR USE WARNINGS

### READ AND FOLLOW ALL INSTRUCTIONS! SAVE THESE INSTRUCTIONS!

**WARNING! To reduce the risk of injury and product damage:**



Feeders are designed to use only Chlorine (Trichloro-s-triazinetriene) or Bromine (Bromochloro -5, 5 Dimethylhydantoin) tablets, slow dissolving type. **UNDER NO CIRCUMSTANCES** MIX Trichlor OR Bromine with Calcium Hypochlorite, with other forms of concentrated chlorine, or with other chemicals **FIRE AND/OR EXPLOSION MAY RESULT.** **NEVER** use oils or grease to lubricate O-ring. Oil in contact with Trichlor OR Bromine may result in **FIRE.** Caution should be used when removing feeder cap. Do not inhale fumes.

If shock treatments or Algaecides containing chemicals other than sanitizer tablets in feeder must be used, then turn off feeder OR remove tablets until the shock or algae treatment is complete and all granules have dissolved. Failure to do so may result

in granules mixing in feeder causing **FIRE AND/OR EXPLOSION.** The shock or algae treatment dissolved in water is safe with tablets.

**ALWAYS WEAR PROTECTION** for eyes, skin and clothing when working with chemicals. Do not smoke and avoid sparks and open flames. Turn off pump and control valve before opening chlorinator. Use of bulk chemicals may result in damage to pool. Chemicals will dissolve very quickly and may cause bleaching to liner due to over-chlorinating, possibly causing unsafe pool conditions.

Settings in excess of the recommended control setting levels for the chlorinator can result in excess chlorine being discharged in your pool. This can result in bleaching or discoloration of areas around the pool inlet or in some cases bleaching of the entire pool liner or paint (**CHECK CHEMICAL RESIDUALS REGULARLY**).

## LIMITED WARRANTY

Waterway Plastics manufactures its products and equipment in accordance with very high standards of workmanship. We use the best materials available and maintain the highest quality procedures practical in the industry. In accordance, Waterway warrants its products as follows: Warranty only applies to OEM's and Distributor's of Waterway.

All plastics parts such as jets, valves, skimmers, manifolds, suction, lights and other plastic components manufactured by Waterway will be replaced or repaired of the defects as determined by Waterway to be the responsibility of Waterway Plastics for a period of THREE YEARS from the date of installation. The warranty does not cover, O-rings, Pressure gauges, Pump seals, or any parts not manufactured by Waterway.



**Waterway**™

2200 East Sturgis Road, Oxnard, CA 93030 • Ph. (805) 981-0262 • Fax (805) 981-9403

www.waterwayplastics.com • waterway@waterwayplastics.com