



## Pool Pumps / Accessories and Wet Ends

### Champion Wet Ends

Part No.	Description	List (US \$)
<b>310-3000</b>	¾ HP SF	554.55
<b>310-3010</b>	1 HP SF	554.55
<b>310-3010-SS</b>	1 HP SF - Stainless Steel	592.33
<b>310-3020</b>	1.5 HP SF	554.55
<b>310-3030</b>	2 HP SF	554.55
<b>310-3030-SS</b>	2 HP SF - Stainless Steel	592.33
<b>310-3040</b>	2.5 HP SF	554.55
<b>310-3050</b>	3 HP SF	554.55
<b>310-3050-SS</b>	3 HP SF - Stainless Steel	592.33
<b>310-3060</b>	¾ HP EF	554.55
<b>310-3070</b>	1 HP EF	554.55
<b>310-3080</b>	1.5 HP EF	554.55
<b>310-3090</b>	2 HP EF	554.55
<b>310-3100</b>	3 HP EF	554.55

### 6" Leaf Traps

Part No.	Description	Case Quantity	List (US \$)
<b>310-5400</b>	1 ½" x 1 ½"	5	92.96
<b>310-6500</b>	1 ½" x 2"	5	105.34
<b>310-6600</b>	2" x 2"	5	105.34

Works with all Hi-Flo II and Center Discharge pumps.

### 2" Hi-Flo II Side Discharge Wet Ends

Part No.	Rating	Case Qty.	List (US \$)
<b>310-7700SD</b>	½ HP	15	130.96
<b>310-7710SD</b>	¾ HP	15	130.96
<b>310-7720SD</b>	1 HP	15	130.96
<b>310-7730SD</b>	1 ½ HP	15	130.96
<b>310-7740SD</b>	2 HP	15	130.96

### Spa Flo Wet Ends

Part No.	Description	List (US \$)
<b>310-7800</b>	2013 Spa Flo II / S/D ½ HP Wet End 1.5"IN/DIS	109.02
<b>310-7810</b>	2013 Spa Flo II / S/D ¾ HP Wet End 1.5"IN/DIS	109.02
<b>310-7820</b>	2013 Spa Flo II / S/D 1 HP Wet End 1.5"IN/DIS	109.02
<b>310-7830</b>	2013 Spa Flo II / S/D 1 ½ HP Wet End 1.5"IN/DIS	130.96
<b>310-7840</b>	2013 Spa Flo II / S/D 2 HP Wet End 1.5"IN/DIS	130.96

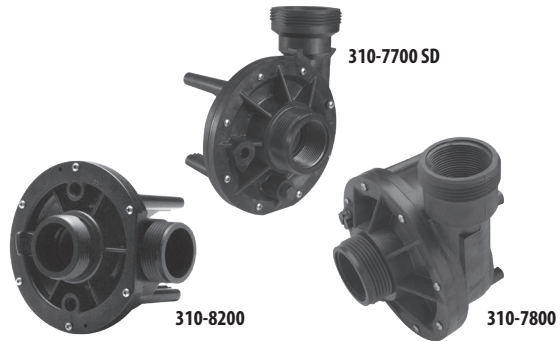


### SVL56 Wet Ends

Part No.	Description	Case Quantity	List (US \$)
<b>310-3500</b>	1 HP - EF	10	598.41
<b>310-3510</b>	1.5 HP - EF	10	598.41
<b>310-3520</b>	2 HP - EF	10	598.41
<b>310-3530</b>	3 HP - EF	10	553.07
<b>310-3540</b>	¾ HP - SF	10	598.41
<b>310-3550</b>	1 HP - SF	10	598.41
<b>310-3560</b>	1.5 HP - SF	10	598.41
<b>310-3570</b>	2 HP - SF	10	598.41
<b>310-3580</b>	2.5 HP - SF	10	598.41

### Supreme Impellers

Part No.	Description	Case Quantity	List (US \$)
<b>310-5080</b>	¾ HP (less trap)	150	37.48
<b>310-5090</b>	1 HP (less trap)	150	37.48
<b>310-5100</b>	1.5 HP or 2 HP (less trap)	150	37.48



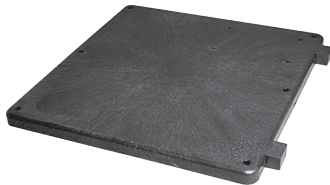
### E-Series Center Discharge Wet Ends

Part No.	Description	List (US \$)
<b>310-8200</b>	½ HP Center Discharge "E" Wet End	130.96
<b>310-8210</b>	¾ HP Center Discharge "E" Wet End	130.96
<b>310-8220</b>	1 HP Center Discharge "E" Wet End	130.96
<b>310-8230</b>	1 ½ HP Center Discharge "E" Wet End	130.96
<b>310-8240</b>	2 HP Center Discharge "E" Wet End	130.96

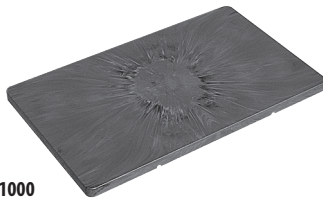
Note: E-Series Center Discharge Wet Ends are the same size as the Standard Series Center Discharge Wet Ends. See Page 302.



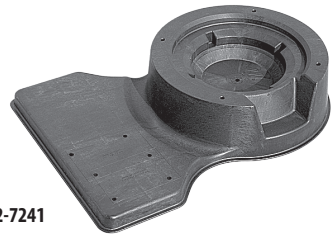
Wet Ends / Bases



672-1010



672-1000



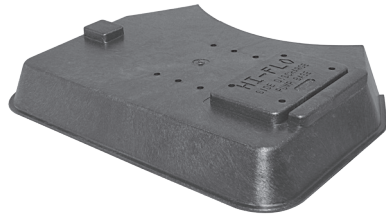
672-7241



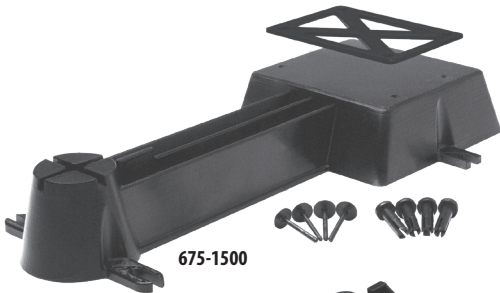
672-7401



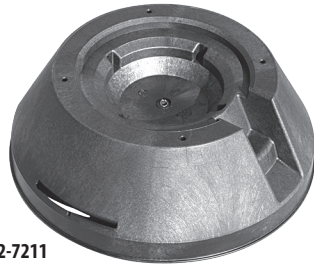
672-7201



672-7221



675-1500



672-7211



CABASE-V



675-1380



CABASE

ClearWater Modular Accessory Base

**Bases**

Part No.	Description	List (US \$)
672-1010	¾" x 14 ½" x 15"	35.93
672-1000	1" x 15 ¼" x 26 ¼"	43.76
672-7241	ClearWater Standard Filter and Pump Base	95.23
672-7401	ClearWater II Filter and Pump Base	181.27
672-7201	ClearWater Modular Pump Base for Supreme/ WorkHorse Pump	40.44
672-7221	ClearWater Modular Pump Base for Hi-Flo Pump	40.44
675-1500	CSA Pump Base, Supreme and Hi Flo Pump	36.09
672-7211	ClearWater/Carefree Modular Filter Base	80.80
675-1380	Champion/SMF Pumps Adjustable Base	41.38
CABASE	ClearWater Modular Accessory Base (for use with Modular Base Systems)	40.44
CABASE-V	Modular Feeder Base (for use with Modular Base Systems)	59.69
CABASE-VF	Feeder Base with Fittings	74.59