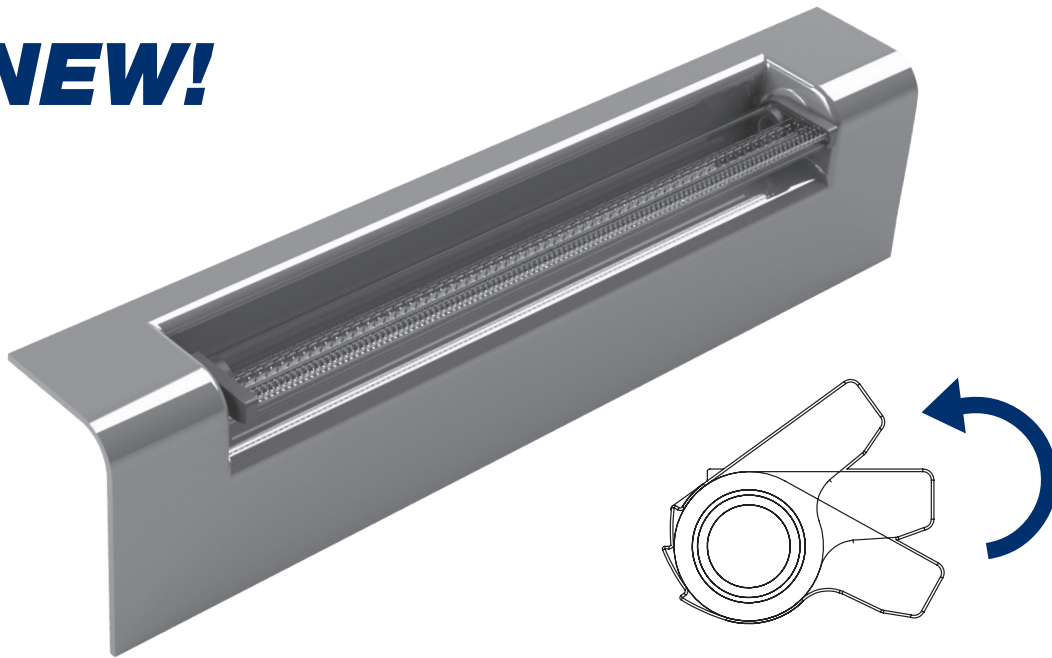




NEW!

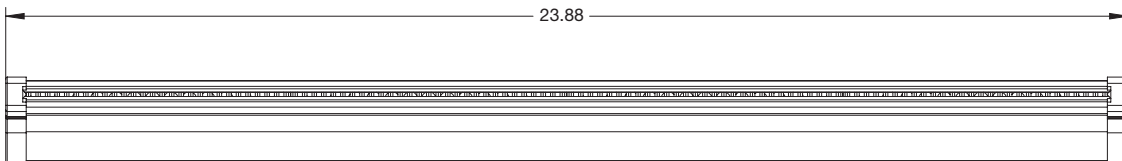
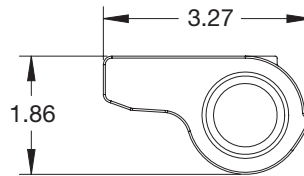


Pivot Falls can be made in multiple sizes from 6" to 24" and can pivot up or down providing optional flow patterns. Strategically placed LED's can light the Pivot Falls in a brilliant array of colors.



FEATURES:

- Pivots Up/Down for optional flow patterns
- Available in 6", 12", 18" and 24" lengths*
- Replaceable center body
- Clear LED body optional



Pivot Falls			
Part No.	Description	Color	List (US\$)
675-3800	Pivot Falls - 24" - 3x4" Socket	White	200.00
675-3800L	Pivot Falls - 24" - 3x4" Socket	Clear/XX	233.33

*Contact your Sales Representative to order 6", 12" or 18" Pivot Falls

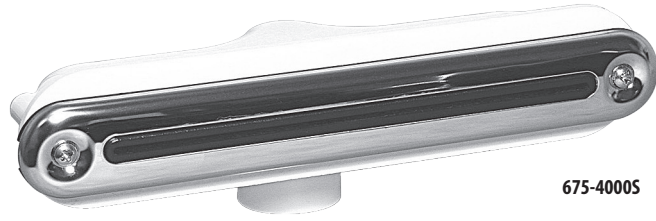


Water Features / Aqua Falls

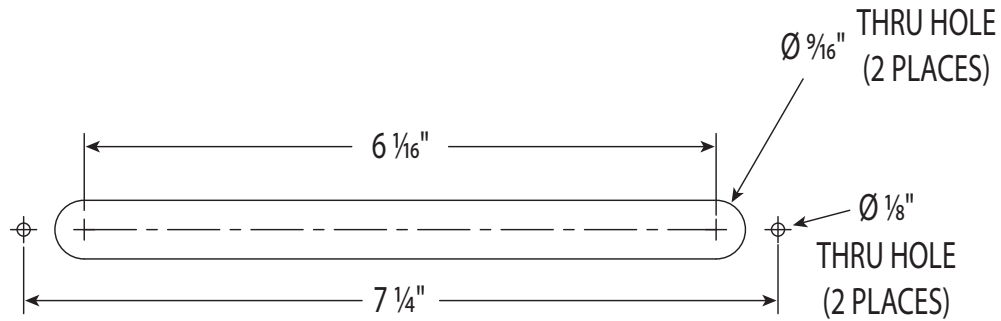
6" AQUA FALL

FEATURES:

- New 304 Stainless Steel escutcheon
- Simple design - less parts
- ¾" S intake
- 3-12 GPM



675-4000S

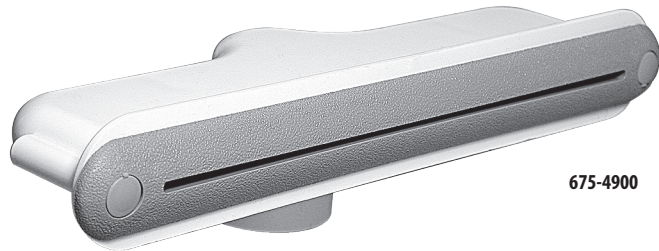


8" LOW PROFILE AQUA FALL

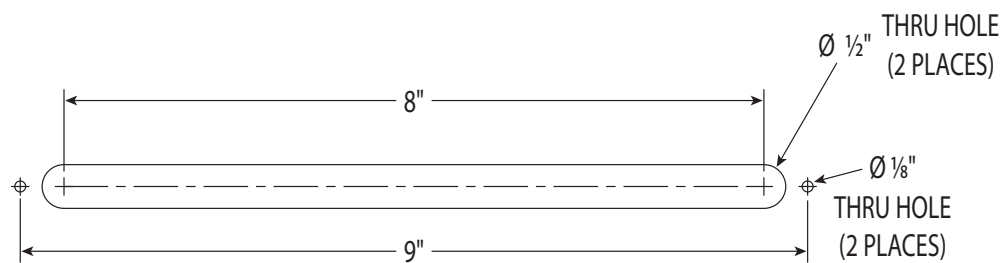
FEATURES:

- Simple design - less parts
- Low body profile
- 1" S intake
- 4-15 GPM

Pat. #6,450,418



675-4900



Aqua Falls

Part No.	Description	Case Quantity	List (US\$)
675-4900	8" Low Profile Aqua Fall	40	79.36
675-4900S	8" Low Profile Aqua Fall - Stainless Steel Blade	40	92.01
675-4000	6" Aqua Fall	50	39.71
675-4000S	6" Aqua Fall - Stainless Steel Blade	50	52.74

Note: See page 183 for LED Aqua Falls.



FEATURES:

- Adjustable Flo Control
- Single 3/4" SB Plumbing
- 316 Stainless Steel Escutcheon
- LED compatible
- NOW available in Colored Plastic!

Patent No. US6450418



675-3519DSG

675-3518LS

3 1/2" Adjustable Cascade

Part No.	Description	Case Quantity	List (US\$)
675-3510	3 1/2" Adjustable Cascade w/plastic blade	40	44.29
675-3518LS	3 1/2" LED Adjustable Cascade w/metal blade	40	62.71

Patent No. US6450418

FEATURES:

- Adjustable Flo Control
- Single 3/4" SB Plumbing
- 316 Stainless Steel Escutcheon
- LED compatible
- NOW available in Colored Plastic!



675-3618LS

675-3619DSG

7" Adjustable Cascade

Part No.	Description	Case Quantity	List (US\$)
675-3610	7" Adjustable Cascade w/plastic blade	15	60.83
675-3618LS	7" LED Adjustable Cascade w/metal blade	15	71.65

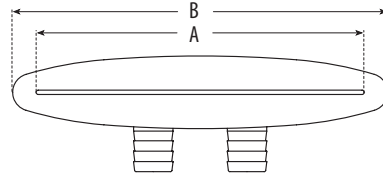
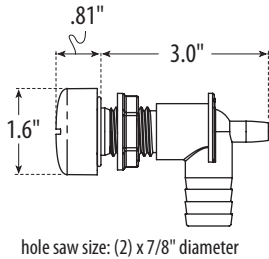


Water Features / Waterway Cascades

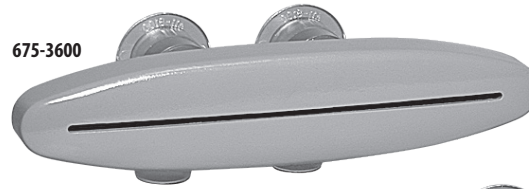
FEATURES:

- Extremely easy to install
- Built-in diffuser
- Easily serviceable

Pat. #6,450,418



Part No.	"A" Dimension	"B" Dimension
675-3500	3.5"	4.31"
675-3600	7"	8"



Waterway Cascades

Part No.	Description	Case Quantity	List (US \$)
675-3500	3 1/2" Cascade - (2) 3/4" RB	20	36.33
675-3500S	3 1/2" Cascade - (2) 3/4" RB - Stainless Steel Blade	20	43.20
675-3508L	3 1/2" LED Cascade - (2) 3/4" RB	60	44.62
675-3508LS	3 1/2" LED Cascade - (2) 3/4" RB - Stainless Steel Blade	60	51.81
675-3550	3 1/2" Cascade - (2) 3/4" RB - with Manifold	--	40.51
675-3550S	3 1/2" Cascade - (2) 3/4" RB - Stainless Steel Blade - with Manifold	--	47.40
675-3558L	3 1/2" LED Cascade - (2) 3/4" RB - with Manifold	25	43.30
675-3558LS	3 1/2" LED Cascade - (2) 3/4" RB - Stainless Steel Blade - with Manifold	25	48.90
675-3600	7" Cascade - (2) 3/4" RB	20	39.73
675-3600S	7" Cascade - (2) 3/4" RB - Stainless Steel Blade	80	47.46
675-3608L	7" LED Cascade - (2) 3/4" RB	20	49.41
675-3608LS	7" LED Cascade - (2) 3/4" RB - Stainless Steel Blade	20	57.14
675-3660	7" Cascade - (2) 3/4" RB - with Manifold	--	45.30
675-3660S	7" Cascade - (2) 3/4" RB - Stainless Steel Blade - with Manifold	--	53.03
675-3668L	7" LED Cascade - (2) 3/4" RB - with Manifold	20	54.99
675-3668LS	7" LED Cascade - (2) 3/4" RB - Stainless Steel Blade - with Manifold	20	62.73
675-3708L	9" LED Cascade - (2) 3/4" RB	20	100.41
675-3708LS	9" LED Cascade - (2) 3/4" RB - Stainless Steel Blade	20	100.41



Spillover WATERFALL



FEATURES:

- Utilizes built-in spa reservoir for water housing
- Sleek, simplistic design
- Adjustable flow control
- Available with glamorous LED feature
- Now top accessible

12" and 18" Spillover Waterfall

Part No.	Description	Case Quantity	List (US\$)
675-5330	Adjustable 12" Spillover Waterfall	1	94.74
675-5330L	Adjustable 12" LED Spillover Waterfall	1	111.80
675-5300	Adjustable 18" Spillover Waterfall	1	115.94
675-5300L	Adjustable 18" LED Spillover Waterfall	1	132.52
675-5280	Non Adjustable 18" Spillover Waterfall	1	98.49
675-5280L	Non Adjustable 18" LED Spillover Waterfall	1	115.07
TW027	12" Spillover Waterfall Negative Mold Insert	1	113.68
TW025	18" Spillover Waterfall Negative Mold Insert	1	151.59



Pat. #6,450,418 and 6,595,675

LED Water Features

Part No.	Description	Case Quantity	List (US \$)
675-4008L	6" LED Aqua Fall	50	48.62
675-4908L	8" Low Profile LED Aqua Fall	40	91.01
210-9200	Flush Mount LED Water Feature	100	62.27
210-9318S	Standard Rope Water Feature, 3/4 SB	100	37.27
210-9278S	Fountain Water Feature, 3/4 SB	100	37.27
210-9288S	Slotted Water Feature, 3/4 SB	100	37.27
210-9308S	Standard Rope Water Feature, 3/4 RB	100	37.27
210-9258S	Fountain Water Feature, 3/4 RB	100	37.27
210-9268S	Slotted Water Feature, 3/4 RB	100	37.27
210-9980S	Flush Mount Water Feature - Eclipse - Metal	100	36.18



Water Features / Pop-Ups

FEATURES:

- Pops up when pressurized
- Drops down when depressurized
- Solid $\frac{7}{16}$ " rod shaped water stream, projects at 45° angle
- Available in several body styles and colors
- Maximum flow 4.76 GPM @ 3 PSI = 48" cascade

Patent # 8,011,604

WATER
FEATURE
popUps



675-0707



675-0807



675-0791L



675-0908L

Pop-Up Water Features

Part No.	Description	Case Quantity	List (US\$)
675-0700	Standard - $\frac{3}{4}$ " RB	50	44.29
675-0710	Standard - $\frac{3}{4}$ " SB	50	44.29
675-0720	Standard - $\frac{3}{4}$ " S	50	44.29
675-0730	Standard - $\frac{1}{2}$ " S	50	44.29
675-0800	Top-Access - $\frac{3}{4}$ " RB	50	44.29
675-0810	Top-Access - $\frac{3}{4}$ " SB	50	44.29
675-0820	Top-Access - $\frac{3}{4}$ " S	50	44.29
675-0830	Top-Access - $\frac{1}{2}$ " S	50	44.29
675-0790L	LED Pop-Up Water Feature - $\frac{3}{4}$ " RB	50	52.24
675-0908L	LED Pop-Up Water Feature - $\frac{3}{4}$ " RB	50	52.24
675-0918L	LED Pop-Up Water Feature - $\frac{3}{4}$ " SB	50	52.24
675-0928L	LED Pop-Up Water Feature - $\frac{3}{4}$ " S	50	52.24
675-0938L	LED Pop-Up Water Feature - $\frac{1}{2}$ " S	50	52.24



FEATURES:

- Pops up when pressurized
- Drops down when depressurized
- Solid 3/16" rod shaped water stream, projects at 45° angle
- Available in several body styles and colors
- Maximum flow 4.76 GPM @ 3 PSI = 48" cascade



675-2000
US Pat. 8214 935



Pop-Up Water Features

Part No.	Description	Case Quantity	List (US\$)
675-2000	LED Pop-Up 180° Dome Feature	32	50.84
675-2000S	LED Pop-Up 180° Dome Feature - Stainless Steel Cap	32	55.69

